

Product datasheet for **AP50338PU-N**

BAHD1 (C-term) Rabbit Polyclonal Antibody

Product data:

Product Type:	Primary Antibodies
Applications:	FC, IHC, WB
Recommended Dilution:	ELISA: 1/1000. Western blotting: 1/100 - 1/500. Immunohistochemistry on paraffin sections: 1/50 - 1/100. Flow cytometry: 1/10 - 1/50.
Reactivity:	Human
Host:	Rabbit
Isotype:	Ig
Clonality:	Polyclonal
Immunogen:	KLH conjugated synthetic peptide between 751~780 amino acids from the C-terminal region of human BAHD1
Specificity:	This antibody reacts to BAHD1.
Formulation:	PBS containing 0.09% (W/V) sodium azide as preservative State: Aff - Purified State: Liquid purified Ig fraction
Concentration:	lot specific
Purification:	Affinity chromatography on Protein A
Conjugation:	Unconjugated
Storage:	Store the antibody undiluted at 2-8°C for one month or (in aliquots) at -20°C for longer. Avoid repeated freezing and thawing.
Stability:	Shelf life: one year from despatch.
Gene Name:	bromo adjacent homology domain containing 1
Database Link:	Entrez Gene 22893 Human Q8TBE0



[View online »](#)

Background:

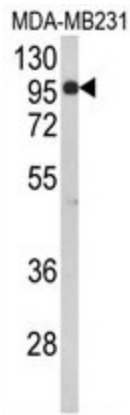
BAHD1 is a heterochromatin protein that acts as a transcription repressor and has the ability to promote the formation of large heterochromatic domains. It may act by recruiting heterochromatin proteins such as CBX5 (HP1 alpha), HDAC5 and MBD1. It represses IGF2 expression by binding to its CpG-rich P3 promoter and recruiting heterochromatin proteins.

Synonyms:

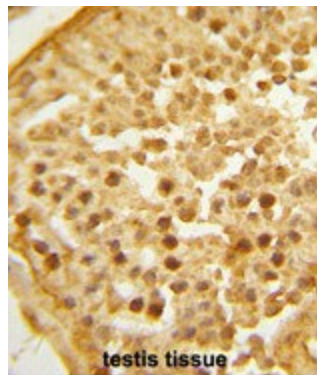
KIAA0945

Note:

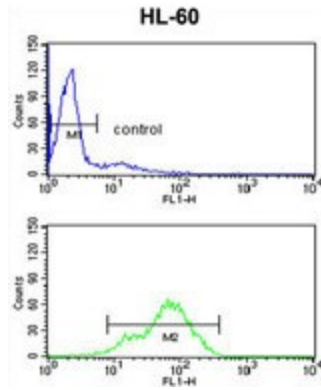
Molecular Weight: 84652 Da

Product images:


Western blot analysis of BAHD1 Antibody (C-term) in MDA-MB231 cell line lysates (35ug/lane). BAHD1 (arrow) was detected using the purified Pab.



Formalin-fixed and paraffin-embedded human testis tissue reacted with BAHD1 Antibody (C-term), which was peroxidase-conjugated to the secondary antibody, followed by DAB staining. This data demonstrates the use of this antibody for immunohistochemistry; clinical relevance has not been evaluated.



BAHD1 Antibody (C-term) flow cytometry analysis of HL-60 cells (bottom histogram) compared to a negative control cell (top histogram). FITC-conjugated goat-anti-rabbit secondary antibodies were used for the analysis.