

## Product datasheet for **AP50337PU-N**

### **BAG5 (N-term) Rabbit Polyclonal Antibody**

#### **Product data:**

Product Type:	Primary Antibodies
Applications:	WB
Recommended Dilution:	<b>ELISA:</b> 1/1000. <b>Western blotting:</b> 1/100 - 1/500.
Reactivity:	Human
Host:	Rabbit
Isotype:	Ig
Clonality:	Polyclonal
Immunogen:	KLH conjugated synthetic peptide between 20-50 amino acids from the N-terminal region of human BAG5
Specificity:	This antibody reacts to BAG5.
Formulation:	PBS containing 0.09% (W/V) sodium azide as preservative State: Aff - Purified State: Liquid purified Ig fraction
Concentration:	lot specific
Purification:	Affinity chromatography on Protein A
Conjugation:	Unconjugated
Storage:	Store the antibody undiluted at 2-8°C for one month or (in aliquots) at -20°C for longer. Avoid repeated freezing and thawing.
Stability:	Shelf life: one year from despatch.
Gene Name:	BCL2 associated athanogene 5
Database Link:	<a href="#">Entrez Gene 9529 Human</a> <a href="#">Q9UL15</a>



[View online »](#)

**Background:**

BAG5 is a member of the BAG1-related protein family. BAG1 is an anti-apoptotic protein that functions through interactions with a variety of cell apoptosis and growth related proteins including BCL-2, Raf-protein kinase, steroid hormone receptors, growth factor receptors and members of the heat shock protein 70 kDa family. This protein contains a BAG domain near the C-terminus, which could bind and inhibit the chaperone activity of Hsc70/Hsp70. Three transcript variants encoding two different isoforms have been found for this gene.

**Synonyms:**

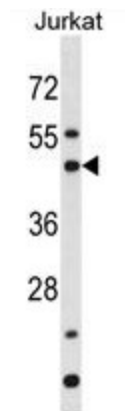
BAG-5, KIAA0873

**Note:**

**Molecular Weight:** 51200 Da

**Protein Families:**

Druggable Genome

**Product images:**

BAG5 Antibody (N-term) western blot analysis in Jurkat cell line lysates (35ug/lane). This demonstrates the BAG5 antibody detected the BAG5 protein (arrow).