

## Product datasheet for **AP50334PU-N**

### **BACH2 (Center) Rabbit Polyclonal Antibody**

#### **Product data:**

Product Type:	Primary Antibodies
Applications:	WB
Recommended Dilution:	<b>ELISA:</b> 1/1000. <b>Western blotting:</b> 1/100 - 1/500.
Reactivity:	Human
Host:	Rabbit
Isotype:	Ig
Clonality:	Polyclonal
Immunogen:	KLH conjugated synthetic peptide between 282-312 amino acids from the Central region of human BACH2
Specificity:	This antibody reacts to BACH2.
Formulation:	PBS containing 0.09% (W/V) sodium azide as preservative State: Aff - Purified State: Liquid purified Ig fraction
Concentration:	lot specific
Purification:	Affinity chromatography on Protein A
Conjugation:	Unconjugated
Storage:	Store the antibody undiluted at 2-8°C for one month or (in aliquots) at -20°C for longer. Avoid repeated freezing and thawing.
Stability:	Shelf life: one year from despatch.
Gene Name:	BTB domain and CNC homolog 2
Database Link:	<a href="#">Entrez Gene 60468 Human Q9BYV9</a>
Background:	BACH2 is a transcriptional regulator that acts as repressor or activator. Binds to Maf recognition elements (MARE). Play important roles in coordinating transcription activation and repression by MAFK (By similarity).
Synonyms:	OTTHUMP00000016868

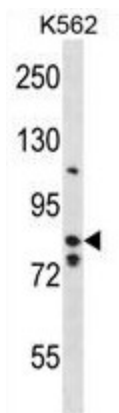


[View online »](#)

Note: **Molecular Weight:** 92537 Da

Protein Families: Druggable Genome, Transcription Factors

### Product images:



BACH2 Antibody (Center) western blot analysis in K562 cell line lysates (35ug/lane). This demonstrates the BACH2 antibody detected the BACH2 protein (arrow).