

## Product datasheet for **AP50333PU-N**

### **BACH1 (C-term) Rabbit Polyclonal Antibody**

#### **Product data:**

Product Type:	Primary Antibodies
Applications:	WB
Recommended Dilution:	<b>Peptide ELISA:</b> 1/1000. <b>Western blotting:</b> 1/1000.
Reactivity:	Human
Host:	Rabbit
Isotype:	Ig
Clonality:	Polyclonal
Immunogen:	KLH conjugated synthetic peptide between 670-698 amino acids from the C-terminal region of human BACH1
Specificity:	This antibody reacts to BACH1.
Formulation:	PBS containing 0.09% (W/V) sodium azide as preservative State: Aff - Purified State: Liquid purified Ig fraction
Concentration:	lot specific
Purification:	Affinity chromatography on Protein A
Conjugation:	Unconjugated
Storage:	Store the antibody undiluted at 2-8°C for one month or (in aliquots) at -20°C for longer. Avoid repeated freezing and thawing.
Stability:	Shelf life: one year from despatch.
Gene Name:	BTB domain and CNC homolog 1
Database Link:	<a href="#">Entrez Gene 571 Human</a> <a href="#">O14867</a>



[View online »](#)

**Background:**

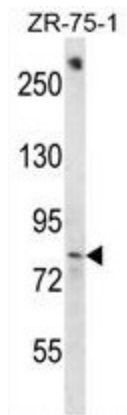
This gene encodes a transcription factor that belongs to the cap'n'collar type of basic region leucine zipper factor family (CNC-bZip). The encoded protein contains broad complex, tramtrack, bric-a-brac/poxvirus and zinc finger (BTB/POZ) domains, which is atypical of CNC-bZip family members. These BTB/POZ domains facilitate protein-protein interactions and formation of homo- and/or hetero-oligomers. When this encoded protein forms a heterodimer with MafK, it functions as a repressor of Maf recognition element (MARE) and transcription is repressed. Multiple alternatively spliced transcript variants have been identified for this gene.

**Synonyms:**

HA2303

**Note:****Molecular Weight:** 81958 Da**Protein Families:**

Transcription Factors

**Product images:**

BACH1 Antibody (C-term) western blot analysis in ZR-75-1 cell line lysates (35ug/lane). This demonstrates the BACH1 antibody detected the BACH1 protein (arrow).