

## Product datasheet for **AP50332PU-N**

### Beta 1,4 galactosyltransferase 6 (B4GALT6) (C-term) Rabbit Polyclonal Antibody

#### Product data:

Product Type:	Primary Antibodies
Applications:	FC, IHC, WB
Recommended Dilution:	<b>ELISA:</b> 1/1000. <b>Western blotting:</b> 1/100 - 1/500. <b>Immunohistochemistry on paraffin sections:</b> 1/50 - 1/100. <b>Flow Cytometry:</b> 1/10 - 1/50.
Reactivity:	Human
Host:	Rabbit
Isotype:	Ig
Clonality:	Polyclonal
Immunogen:	KLH conjugated synthetic peptide between 322-350 amino acids from the C-terminal region of human B4GALT6
Specificity:	This antibody reacts to B4GALT6.
Formulation:	PBS containing 0.09% (W/V) sodium azide as preservative State: Aff - Purified State: Liquid purified Ig fraction
Concentration:	lot specific
Purification:	Affinity chromatography on Protein A
Conjugation:	Unconjugated
Storage:	Store the antibody undiluted at 2-8°C for one month or (in aliquots) at -20°C for longer. Avoid repeated freezing and thawing.
Stability:	Shelf life: one year from despatch.
Gene Name:	beta-1,4-galactosyltransferase 6
Database Link:	<a href="#">Entrez Gene 9331 Human Q9UBX8</a>



[View online »](#)

**Background:**

This gene is one of seven beta-1,4-galactosyltransferase (beta4GalT) genes. They encode type II membrane-bound glycoproteins that appear to have exclusive specificity for the donor substrate UDP-galactose; all transfer galactose in a beta1,4 linkage to similar acceptor sugars: GlcNAc, Glc, and Xyl. Each beta4GalT has a distinct function in the biosynthesis of different glycoconjugates and saccharide structures. As type II membrane proteins, they have an N-terminal hydrophobic signal sequence that directs the protein to the Golgi apparatus and which then remains uncleaved to function as a transmembrane anchor. By sequence similarity, the beta4GalTs form four groups: beta4GalT1 and beta4GalT2, beta4GalT3 and beta4GalT4, beta4GalT5 and beta4GalT6, and beta4GalT7. The enzyme encoded by this gene is a lactosylceramide synthase important for glycolipid biosynthesis.

**Synonyms:**

Beta-1,4-GalTase 6, Beta4Gal-T6, b4Gal-T6

**Note:**

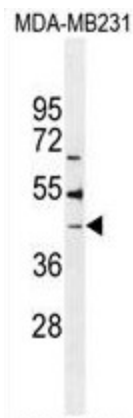
**Molecular Weight:** 44914 Da

**Protein Families:**

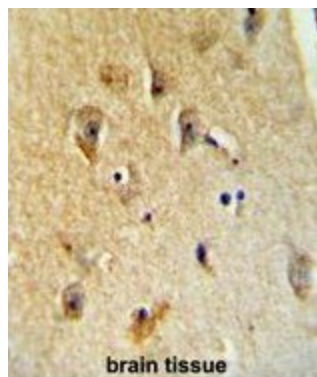
Transmembrane

**Protein Pathways:**

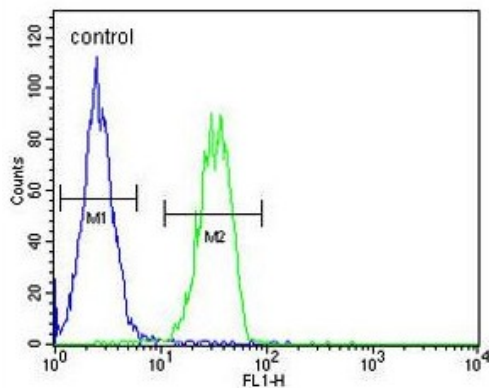
Metabolic pathways, Sphingolipid metabolism

**Product images:**

B4GALT6 Antibody (C-term) western blot analysis in MDA-MB231 cell line lysates (35ug/lane). This demonstrates the B4GALT6 antibody detected the B4GALT6 protein (arrow).



B4GALT6 Antibody (C-term) immunohistochemistry analysis in formalin fixed and paraffin embedded human brain tissue followed by peroxidase conjugation of the secondary antibody and DAB staining. This data demonstrates the use of the B4GALT6 Antibody (C-term) for immunohistochemistry. Clinical relevance has not been evaluated.

**MDA-MB231**

B4GALT6 Antibody (C-term) flow cytometric analysis of MDA-MB231 cells (right histogram) compared to a negative control cell (left histogram). FITC-conjugated goat-anti-rabbit secondary antibodies were used for the analysis.