

## Product datasheet for **AP50331PU-N**

### **B4GALT3 (B4GALT2) (C-term) Rabbit Polyclonal Antibody**

#### Product data:

Product Type:	Primary Antibodies
Applications:	WB
Recommended Dilution:	<b>ELISA:</b> 1/1000. <b>Western blotting:</b> 1/100 - 1/500.
Reactivity:	Human, Mouse
Host:	Rabbit
Isotype:	Ig
Clonality:	Polyclonal
Immunogen:	KLH conjugated synthetic peptide between 297~326 amino acids from the C-terminal region of human B4GALT2
Specificity:	This antibody reacts to B4GALT2.
Formulation:	PBS containing 0.09% (W/V) sodium azide as preservative State: Aff - Purified State: Liquid purified Ig fraction
Concentration:	lot specific
Purification:	Affinity chromatography on Protein A
Conjugation:	Unconjugated
Storage:	Store the antibody undiluted at 2-8°C for one month or (in aliquots) at -20°C for longer. Avoid repeated freezing and thawing.
Stability:	Shelf life: one year from despatch.
Gene Name:	beta-1,4-galactosyltransferase 2
Database Link:	<a href="#">Entrez Gene 53418 Mouse</a> <a href="#">Entrez Gene 8704 Human</a> <a href="#">O60909</a>



[View online »](#)

**Background:** B4GALT2 is one of type II membrane-bound glycoproteins that appear to have exclusive specificity for the donor substrate UDP-galactose; all transfer galactose in a beta1,4 linkage to similar acceptor sugars: GlcNAc, Glc, and Xyl. Each beta4GalT has a distinct function in the biosynthesis of different glycoconjugates and saccharide structures. As type II membrane proteins, they have an N-terminal hydrophobic signal sequence that directs the protein to the Golgi apparatus and which then remains uncleaved to function as a transmembrane anchor. By sequence similarity, the beta4GalTs form four groups: beta4GalT1 and beta4GalT2, beta4GalT3 and beta4GalT4, beta4GalT5 and beta4GalT6, and beta4GalT7. The enzyme synthesizes N-acetyllactosamine in glycolipids and glycoproteins. Its substrate specificity is affected by alpha-lactalbumin but it is not expressed in lactating mammary tissue.

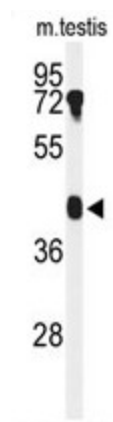
**Synonyms:** Beta-1,4-GalTase 2, Beta4Gal-T2, b4Gal-T2

**Note:** **Molecular Weight:** 41972 Da

**Protein Families:** Transmembrane

**Protein Pathways:** Galactose metabolism, Glycosphingolipid biosynthesis - lacto and neolacto series, Keratan sulfate biosynthesis, Metabolic pathways, N-Glycan biosynthesis

### Product images:



Western blot analysis of B4GALT2 Antibody (C-term) in mouse testis tissue lysates (35ug/lane). B4GALT2 (arrow) was detected using the purified Pab.