

## Product datasheet for **AP50328PU-N**

### **B3GNT4 (Center) Rabbit Polyclonal Antibody**

#### Product data:

Product Type:	Primary Antibodies
Applications:	FC, WB
Recommended Dilution:	<b>ELISA:</b> 1/1000. <b>Western blotting:</b> 1/100 - 1/500. <b>Flow Cytometry:</b> 1/10 - 1/50.
Reactivity:	Human, Mouse
Host:	Rabbit
Isotype:	Ig
Clonality:	Polyclonal
Immunogen:	KLH conjugated synthetic peptide between 236-264 amino acids from the Central region of human B3GNT4
Specificity:	This antibody reacts to B3GNT4.
Formulation:	PBS containing 0.09% (W/V) sodium azide as preservative State: Aff - Purified State: Liquid purified Ig fraction
Concentration:	lot specific
Purification:	Affinity chromatography on Protein A
Conjugation:	Unconjugated
Storage:	Store the antibody undiluted at 2-8°C for one month or (in aliquots) at -20°C for longer. Avoid repeated freezing and thawing.
Stability:	Shelf life: one year from despatch.
Gene Name:	UDP-GlcNAc:betaGal beta-1,3-N-acetylglucosaminyltransferase 4
Database Link:	<a href="#">Entrez Gene 231727 Mouse</a> <a href="#">Entrez Gene 79369 Human</a> <a href="#">Q9C0J1</a>
Background:	This gene encodes a member of the beta-1,3-N-acetylglucosaminyltransferase protein family. The encoded enzyme is involved in the biosynthesis of poly-N-acetylglucosamine chains and prefers lacto-N-neotetraose as a substrate. It is a type II transmembrane protein. [provided by RefSeq].



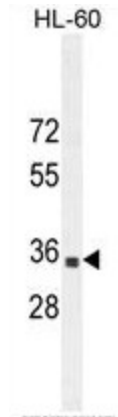
[View online »](#)

**Synonyms:** Beta3Gn-T4, BGnT-4, UNQ1898/PRO4344

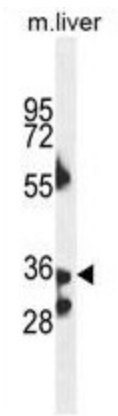
**Note:** **Molecular Weight:** 42310 Da

**Protein Pathways:** Glycosphingolipid biosynthesis - lacto and neolacto series, Metabolic pathways

**Product images:**

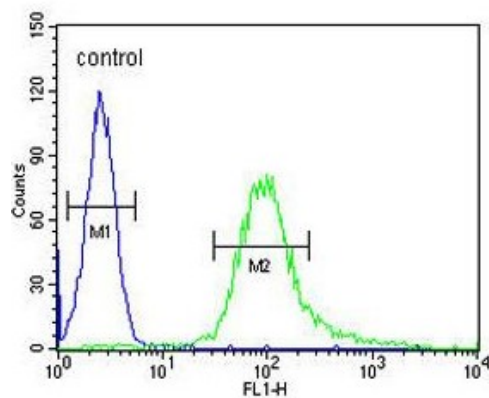


B3GNT4 Antaibody (Center) western blot analysis in HL-60 cell line lysates (35ug/lane).This demonstrates the B3GNT4 antibody detected the B3GNT4 protein (arrow).



B3GNT4 Antaibody (Center) western blot analysis in mouse liver tissue lysates (35ug/lane).This demonstrates the B3GNT4 antibody detected the B3GNT4 protein (arrow).

## HL-60



B3GNT4 Antibody (Center) flow cytometric analysis of HL-60 cells (right histogram) compared to a negative control cell (left histogram). FITC-conjugated goat-anti-rabbit secondary antibodies were used for the analysis.