

## Product datasheet for **AP50321PU-N**

### Azurocidin (AZU1) (Center) Rabbit Polyclonal Antibody

#### Product data:

Product Type:	Primary Antibodies
Applications:	WB
Recommended Dilution:	<b>ELISA:</b> 1/1000. <b>Western blotting:</b> 1/100 - 1/500.
Reactivity:	Human
Host:	Rabbit
Isotype:	Ig
Clonality:	Polyclonal
Immunogen:	KLH conjugated synthetic peptide between 66-96 amino acids from the Central region of human AZU1
Specificity:	This antibody reacts to Azurocidin.
Formulation:	PBS containing 0.09% (W/V) sodium azide as preservative State: Aff - Purified State: Liquid purified Ig fraction
Concentration:	lot specific
Purification:	Affinity chromatography on Protein A
Conjugation:	Unconjugated
Storage:	Store the antibody undiluted at 2-8°C for one month or (in aliquots) at -20°C for longer. Avoid repeated freezing and thawing.
Stability:	Shelf life: one year from despatch.
Gene Name:	azurocidin 1
Database Link:	<a href="#">Entrez Gene 566 Human P20160</a>



[View online »](#)

**Background:**

Azurophil granules, specialized lysosomes of the neutrophil, contain at least 10 proteins implicated in the killing of microorganisms. The protein encoded by this gene is an azurophil granule antibiotic protein, with monocyte chemotactic and antibacterial activity. It is also an important multifunctional inflammatory mediator. This encoded protein is a member of the serine protease gene family but it is not a serine proteinase, because the active site serine and histidine residues are replaced. The genes encoding this protein, neutrophil elastase 2, and proteinase 3 are in a cluster located at chromosome 19pter. All 3 genes are expressed coordinately and their protein products are packaged together into azurophil granules during neutrophil differentiation.

**Synonyms:**

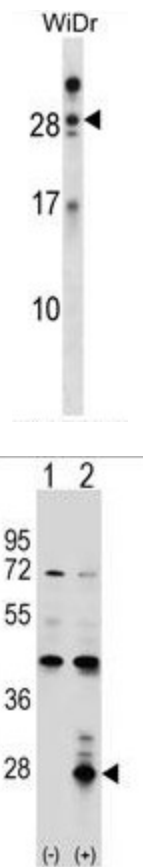
CAP37, Heparin-binding protein, HBP

**Note:**

**Molecular Weight:** 26886 Da

**Protein Families:**

Druggable Genome, Protease

**Product images:**


AZU1 Antibody (Center) western blot analysis in WiDr cell line lysates (35ug/lane). This demonstrates the AZU1 antibody detected the AZU1 protein (arrow).

Western blot analysis of AZU1 (arrow) using rabbit polyclonal AZU1 Antibody (Center). 293 cell lysates (2 ug/lane) either nontransfected (Lane 1) or transiently transfected (Lane 2) with the AZU1 gene.