

## Product datasheet for **AP50319PU-N**

### Axin 1 (AXIN1) (C-term) Rabbit Polyclonal Antibody

#### Product data:

Product Type:	Primary Antibodies
Applications:	IHC, WB
Recommended Dilution:	<b>Peptide ELISA:</b> 1/1000. <b>Western blotting:</b> 1/1000. <b>Immunohistochemistry on paraffin sections:</b> 1/10 - 1/50.
Reactivity:	Human
Host:	Rabbit
Isotype:	Ig
Clonality:	Polyclonal
Immunogen:	KLH conjugated synthetic peptide between 710-738 amino acids from the C-terminal region of human AXIN1
Specificity:	This antibody reacts to Axin-1.
Formulation:	PBS containing 0.09% (W/V) sodium azide as preservative State: Aff - Purified State: Liquid purified Ig fraction
Concentration:	lot specific
Purification:	Affinity chromatography on Protein A
Conjugation:	Unconjugated
Storage:	Store the antibody undiluted at 2-8°C for one month or (in aliquots) at -20°C for longer. Avoid repeated freezing and thawing.
Stability:	Shelf life: one year from despatch.
Gene Name:	axin 1
Database Link:	<a href="#">Entrez Gene 8312 Human O15169</a>



[View online »](#)

**Background:** This gene encodes a cytoplasmic protein which contains a regulation of G-protein signaling (RGS) domain and a dishevelled and axin (DIX) domain. The encoded protein interacts with adenomatous polyposis coli, catenin beta-1, glycogen synthase kinase 3 beta, protein phosphate 2, and itself. This protein functions as a negative regulator of the wingless-type MMTV integration site family, member 1 (WNT) signaling pathway and can induce apoptosis. The crystal structure of a portion of this protein, alone and in a complex with other proteins, has been resolved. Mutations in this gene have been associated with hepatocellular carcinoma, hepatoblastomas, ovarian endometrioid adenocarcinomas, and medullablastomas. Two transcript variants encoding distinct isoforms have been identified for this gene.

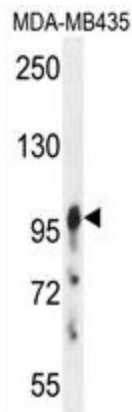
**Synonyms:** AXIN1, AXIN

**Note:** **Molecular Weight:** 95635 Da

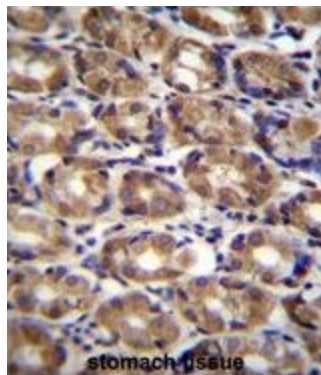
**Protein Families:** Druggable Genome, ES Cell Differentiation/IPS, Stem cell relevant signaling - Wnt Signaling pathway

**Protein Pathways:** Basal cell carcinoma, Colorectal cancer, Endometrial cancer, Pathways in cancer, Wnt signaling pathway

### Product images:



AXIN1 Antibody (C-term) western blot analysis in MDA-MB435 cell line lysates (35ug/lane). This demonstrates the AXIN1 antibody detected the AXIN1 protein (arrow).



AXIN1 Antibody (C-term) immunohistochemistry analysis in formalin fixed and paraffin embedded human stomach tissue followed by peroxidase conjugation of the secondary antibody and DAB staining. This data demonstrates the use of AXIN1 Antibody (C-term) for immunohistochemistry. Clinical relevance has not been evaluated.