

Product datasheet for **AP50316PU-N**

AVPI1 (N-term) Rabbit Polyclonal Antibody

Product data:

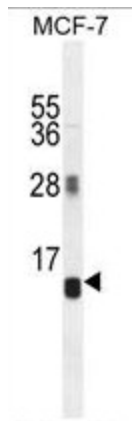
Product Type:	Primary Antibodies
Applications:	FC, WB
Recommended Dilution:	ELISA: 1/1000. Western blotting: 1/100 - 1/500. Flow Cytometry: 1/10 - 1/50.
Reactivity:	Human
Host:	Rabbit
Isotype:	Ig
Clonality:	Polyclonal
Immunogen:	KLH conjugated synthetic peptide between 63-91 amino acids from the N-terminal region of human AVPI1
Specificity:	This antibody reacts to AVP-induced protein 1.
Formulation:	PBS containing 0.09% (W/V) sodium azide as preservative State: Aff - Purified State: Liquid purified Ig fraction
Concentration:	lot specific
Purification:	Affinity chromatography on Protein A
Conjugation:	Unconjugated
Storage:	Store the antibody undiluted at 2-8°C for one month or (in aliquots) at -20°C for longer. Avoid repeated freezing and thawing.
Stability:	Shelf life: one year from despatch.
Gene Name:	arginine vasopressin induced 1
Database Link:	Entrez Gene 60370 Human Q5T686
Background:	May be involved in MAP kinase activation, epithelial sodium channel (ENaC) down-regulation and cell cycling (By similarity).
Synonyms:	AVPI1, NPD013, PP5395



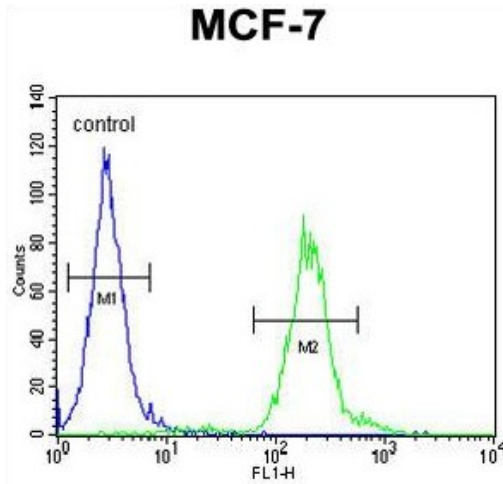
[View online »](#)

Note: **Molecular Weight:** 16759 Da

Product images:



AVPI1 Antibody (N-term) western blot analysis in MCF-7 cell line lysates (35ug/lane). This demonstrates the AVPI1 antibody detected the AVPI1 protein (arrow).



AVPI1 Antibody (N-term) flow cytometric analysis of MCF-7 cells (right histogram) compared to a negative control cell (left histogram). FITC-conjugated goat-anti-rabbit secondary antibodies were used for the analysis.