

Product datasheet for **AP50315PU-N**

Ancient ubiquitous protein 1 (AUP1) (C-term) Rabbit Polyclonal Antibody

Product data:

Product Type:	Primary Antibodies
Applications:	WB
Recommended Dilution:	ELISA: 1/1000. Western blotting: 1/100 - 1/500
Reactivity:	Human
Host:	Rabbit
Isotype:	Ig
Clonality:	Polyclonal
Immunogen:	KLH conjugated synthetic peptide between 439-468 amino acids from the C-terminal region of human AUP1
Specificity:	This antibody reacts to AUP1.
Formulation:	PBS containing 0.09% (W/V) sodium azide as preservative State: Aff - Purified State: Liquid purified Ig fraction
Concentration:	lot specific
Purification:	Affinity chromatography on Protein A
Conjugation:	Unconjugated
Storage:	Store the antibody undiluted at 2-8°C for one month or (in aliquots) at -20°C for longer. Avoid repeated freezing and thawing.
Stability:	Shelf life: one year from despatch.
Gene Name:	ancient ubiquitous protein 1
Database Link:	Entrez Gene 550 Human Q9Y679



[View online »](#)

Background:

This gene encodes a protein that contains a domain with homology to the ancient conserved region of the archain 1 gene and a domain that may be involved in binding ubiquitin-conjugating enzymes. The protein encoded by this gene has been shown to bind to the conserved membrane-proximal sequence of the cytoplasmic tail of integrin alpha(IIb) subunits. These subunits play a crucial role in the integrin alpha(IIb)beta(3) inside-out signalling in platelets and megakaryocytes that leads to platelet aggregation and thrombus formation. This gene overlaps the gene for mitochondrial serine protease 25.

Synonyms:

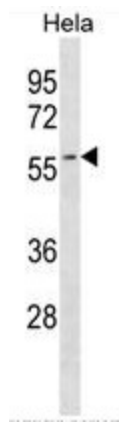
Ancient ubiquitous protein 1

Note:

Molecular Weight: 53028 Da

Protein Families:

Druggable Genome, Transmembrane

Product images:

AUP1 Antibody (C-term) western blot analysis in HeLa cell line lysates (35ug/lane). This demonstrates the AUP1 antibody detected the AUP1 protein (arrow).