

Product datasheet for **AP50313PU-N**

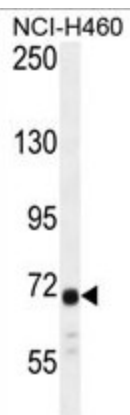
ATXN7L2 (C-term) Rabbit Polyclonal Antibody

Product data:

Product Type:	Primary Antibodies
Applications:	WB
Recommended Dilution:	ELISA: 1/1000. Western blotting: 1/100 - 1/500.
Reactivity:	Human
Host:	Rabbit
Isotype:	Ig
Clonality:	Polyclonal
Immunogen:	KLH conjugated synthetic peptide between 562-593 amino acids from the C-terminal region of human ATXN7L2
Specificity:	This antibody reacts to ATXN7L2.
Formulation:	PBS containing 0.09% (W/V) sodium azide as preservative State: Aff - Purified State: Liquid purified Ig fraction
Concentration:	lot specific
Purification:	Affinity chromatography on Protein A
Conjugation:	Unconjugated
Storage:	Store the antibody undiluted at 2-8°C for one month or (in aliquots) at -20°C for longer. Avoid repeated freezing and thawing.
Stability:	Shelf life: one year from despatch.
Gene Name:	ataxin 7 like 2
Database Link:	Entrez Gene 127002 Human Q5T6C5
Synonyms:	FLJ00381; MGC46534
Note:	Molecular Weight: 77181 Da



[View online »](#)

Product images:

ATXN7L2 Antibody (C-term) western blot analysis in NCI-H460 cell line lysates (35ug/lane). This demonstrates the ATXN7L2 antibody detected the ATXN7L2 protein (arrow).