

Product datasheet for **AP50309PU-N**

ATPBD3 (CTU1) (Center) Rabbit Polyclonal Antibody

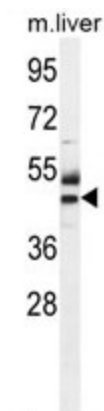
Product data:

Product Type:	Primary Antibodies
Applications:	IHC, WB
Recommended Dilution:	ELISA: 1/1000. Western blotting: 1/100 - 1/500. Immunohistochemistry on paraffin sections: 1/50 - 1/100.
Reactivity:	Human, Mouse
Host:	Rabbit
Isotype:	Ig
Clonality:	Polyclonal
Immunogen:	KLH conjugated synthetic peptide between 215-245 amino acids from the Central region of human ATPBD3
Specificity:	This antibody reacts to ATPBD3.
Formulation:	Purified polyclonal antibody supplied in PBS with 0.09% (W/V) sodium azide. This antibody is purified through a protein A column; followed by peptide affinity purification. State: Aff - Purified State: Liquid purified Ig fraction
Concentration:	lot specific
Purification:	Affinity chromatography on Protein A
Conjugation:	Unconjugated
Storage:	Store the antibody undiluted at 2-8°C for one month or (in aliquots) at -20°C for longer. Avoid repeated freezing and thawing.
Stability:	Shelf life: one year from despatch.
Gene Name:	cytosolic thiouridylase subunit 1
Database Link:	Entrez Gene 90353 Human Q7Z7A3
Synonyms:	Cytoplasmic tRNA 2-thiolation protein 1, ATPBD3, NCS6, ATP-binding domain-containing protein 3, Cancer-associated gene protein, Cytoplasmic tRNA adenylyltransferase 1
Note:	Molecular Weight: 36450 Da

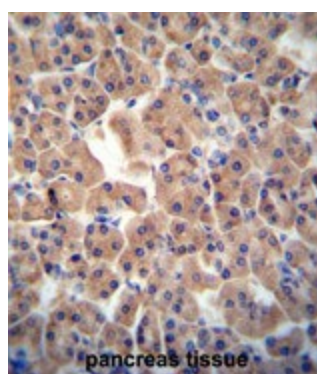


[View online »](#)

Product images:



ATPBD3 Antibody (Center) western blot analysis in mouse liver tissue lysates (35ug/lane). This demonstrates the ATPBD3 antibody detected the ATPBD3 protein (arrow).



ATPBD3 antibody (Center) immunohistochemistry analysis in formalin fixed and paraffin embedded human pancreas tissue followed by peroxidase conjugation of the secondary antibody and DAB staining. This data demonstrates the use of the ATPBD3 antibody (Center) for immunohistochemistry. Clinical relevance has not been evaluated.