

Product datasheet for **AP50308PU-N**

ATP8A2 (N-term) Rabbit Polyclonal Antibody

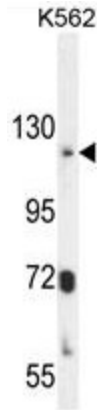
Product data:

Product Type:	Primary Antibodies
Applications:	FC, WB
Recommended Dilution:	ELISA: 1/1000. Western blotting: 1/100 - 1/500. Flow Cytometry: 1/10 - 1/50.
Reactivity:	Human
Host:	Rabbit
Isotype:	Ig
Clonality:	Polyclonal
Immunogen:	KLH conjugated synthetic peptide between 296-326 amino acids from the N-terminal region of human ATP8A2
Specificity:	This antibody reacts to ATP8A2.
Formulation:	PBS containing 0.09% (W/V) sodium azide as preservative State: Aff - Purified State: Liquid purified Ig fraction
Concentration:	lot specific
Purification:	Affinity chromatography on Protein A
Conjugation:	Unconjugated
Storage:	Store the antibody undiluted at 2-8°C for one month or (in aliquots) at -20°C for longer. Avoid repeated freezing and thawing.
Stability:	Shelf life: one year from despatch.
Gene Name:	ATPase phospholipid transporting 8A2
Database Link:	Entrez Gene 51761 Human Q9NTI2
Synonyms:	ATPIB, ML-1
Note:	Molecular Weight: 129242 Da
Protein Families:	Transmembrane

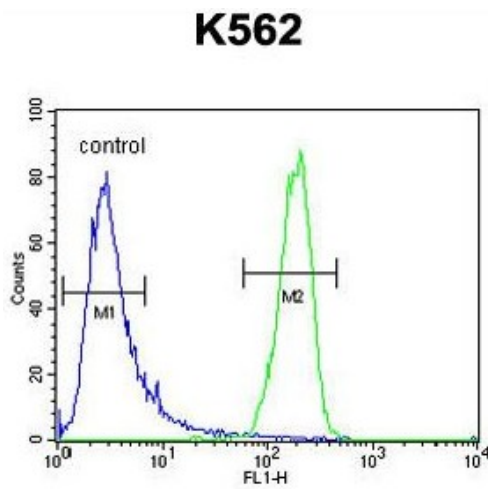


[View online »](#)

Product images:



ATP8A2 Antibody (N-term) western blot analysis in K562 cell line lysates (35ug/lane). This demonstrates the ATP8A2 antibody detected the ATP8A2 protein (arrow).



ATP8A2 Antibody (N-term) flow cytometric analysis of K562 cells (right histogram) compared to a negative control cell (left histogram). FITC-conjugated goat-anti-rabbit secondary antibodies were used for the analysis.