

Product datasheet for **AP50292PU-N**

ATP13A2 (C-term) Rabbit Polyclonal Antibody

Product data:

Product Type:	Primary Antibodies
Applications:	WB
Recommended Dilution:	ELISA: 1/1000. Western blotting: 1/100 - 1/500.
Reactivity:	Human
Host:	Rabbit
Isotype:	Ig
Clonality:	Polyclonal
Immunogen:	KLH conjugated synthetic peptide between 1132-1161 amino acids from the C-terminal region of human ATP13A2
Specificity:	This antibody reacts to ATP13A2.
Formulation:	PBS containing 0.09% (W/V) sodium azide as preservative State: Aff - Purified State: Liquid purified Ig fraction
Concentration:	lot specific
Purification:	Affinity chromatography on Protein A
Conjugation:	Unconjugated
Storage:	Store the antibody undiluted at 2-8°C for one month or (in aliquots) at -20°C for longer. Avoid repeated freezing and thawing.
Stability:	Shelf life: one year from despatch.
Gene Name:	ATPase 13A2
Database Link:	Entrez Gene 23400 Human Q9NQ11
Background:	This gene encodes a member of the P5 subfamily of ATPases which transports inorganic cations as well as other substrates. Mutations in this gene are associated with Kufor-Rakeb syndrome (KRS), also referred to as Parkinson disease 9. Multiple transcript variants encoding different isoforms have been found for this gene.
Synonyms:	FLJ26510; HSA9947; KRPPD; PARK9

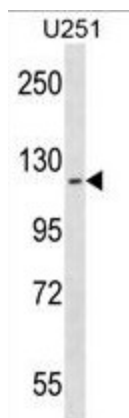


[View online »](#)

Note: **Molecular Weight:** 128794 Da

Protein Families: Transmembrane

Product images:



ATP13A2 Antibody (C-term) western blot analysis in U251 cell line lysates (35ug/lane). This demonstrates the ATP13A2 antibody detected the ATP13A2 protein (arrow).