

Product datasheet for **AP50288PU-N**

SPG3A (ATL1) (C-term) Rabbit Polyclonal Antibody

Product data:

Product Type:	Primary Antibodies
Applications:	WB
Recommended Dilution:	ELISA: 1/1000. Western blotting: 1/100 - 1/500.
Reactivity:	Human
Host:	Rabbit
Isotype:	Ig
Clonality:	Polyclonal
Immunogen:	KLH conjugated synthetic peptide between 476-504 amino acids from the C-terminal region of human ATL1
Specificity:	This antibody reacts to Atlastin-1.
Formulation:	PBS containing 0.09% (W/V) sodium azide as preservative State: Aff - Purified State: Liquid purified Ig fraction
Concentration:	lot specific
Purification:	Affinity chromatography on Protein A
Conjugation:	Unconjugated
Storage:	Store the antibody undiluted at 2-8°C for one month or (in aliquots) at -20°C for longer. Avoid repeated freezing and thawing.
Stability:	Shelf life: one year from despatch.
Gene Name:	atlastin GTPase 1
Database Link:	Entrez Gene 51062 Human Q8WXF7



[View online »](#)

Background:

The protein encoded by this gene is a GTPase and a Golgi body transmembrane protein. The encoded protein can form a homotetramer and has been shown to interact with spastin and with mitogen-activated protein kinase kinase kinase 4. This protein may be involved in axonal maintenance as evidenced by the fact that defects in this gene are a cause of spastic paraplegia type 3. Three transcript variants encoding two different isoforms have been found for this gene.

Synonyms:

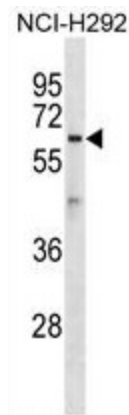
ATL1, GBP3, GBP-3, Spastic paraplegia 3 protein A, GTP-binding protein 3

Note:

Molecular Weight: 63544 Da

Protein Families:

Druggable Genome, Transmembrane

Product images:

ATL1 Antibody (C-term) western blot analysis in NCI-H292 cell line lysates (35ug/lane). This demonstrates the ATL1 antibody detected the ATL1 protein (arrow).