

Product datasheet for **AP50287PU-N**

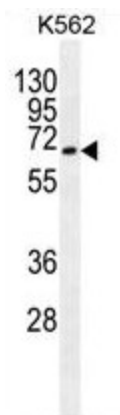
ATG16L2 (Center) Rabbit Polyclonal Antibody

Product data:

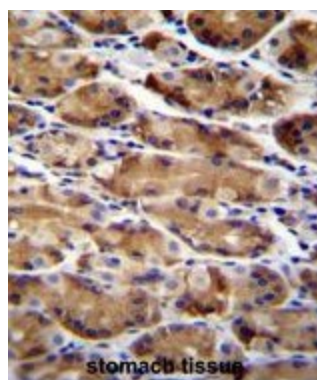
Product Type:	Primary Antibodies
Applications:	IHC, WB
Recommended Dilution:	ELISA: 1/1000. Western blot: 1/100-1/500. Immunohistochemistry on Paraffin Sections: 1/50-1/100.
Reactivity:	Human
Host:	Rabbit
Isotype:	Ig
Clonality:	Polyclonal
Immunogen:	KLH conjugated synthetic peptide between 284-312 amino acids from the Central region of Human ATG16L2
Specificity:	This antibody recognizes Human ATG16L2. Other species not tested.
Formulation:	PBS containing 0.09% (W/V) Sodium Azide as preservative State: Aff - Purified State: Liquid purified Ig fraction
Concentration:	lot specific
Purification:	Protein A column, followed by peptide affinity purification
Conjugation:	Unconjugated
Storage:	Store undiluted at 2-8°C for one month or (in aliquots) at -20°C for longer. Avoid repeated freezing and thawing.
Stability:	Shelf life: one year from despatch.
Gene Name:	autophagy related 16 like 2
Database Link:	Entrez Gene 89849 Human Q8NAA4
Synonyms:	Autophagy-related protein 16-2, WDR80, APG16-like 2, WD repeat-containing protein 80
Note:	Molecular Weight: 68998 Da



[View online »](#)

Product images:

Western blot analysis using ATG16L2 Antibody (Center) in K562 cell line lysates (35ug/lane). This demonstrates the ATG16L2 antibody detected the ATG16L2 protein (arrow).



Formalin Fixed, Paraffin Embedded human stomach tissue reacted with ATG16L2 Antibody (Center) followed by peroxidase conjugation of the secondary antibody and DAB staining.