

## Product datasheet for **AP50286PU-N**

### ATF5 (C-term) Rabbit Polyclonal Antibody

#### Product data:

Product Type:	Primary Antibodies
Applications:	WB
Recommended Dilution:	<b>ELISA:</b> 1/1000. <b>Western blotting:</b> 1/100 - 1/500.
Reactivity:	Human
Host:	Rabbit
Isotype:	Ig
Clonality:	Polyclonal
Immunogen:	KLH conjugated synthetic peptide between 187-216 amino acids from the C-terminal region of human ATF5
Specificity:	This antibody reacts to ATF5.
Formulation:	PBS containing 0.09% (W/V) sodium azide as preservative State: Aff - Purified State: Liquid purified Ig fraction
Concentration:	lot specific
Purification:	Affinity chromatography on Protein A
Conjugation:	Unconjugated
Storage:	Store the antibody undiluted at 2-8°C for one month or (in aliquots) at -20°C for longer. Avoid repeated freezing and thawing.
Stability:	Shelf life: one year from despatch.
Gene Name:	activating transcription factor 5
Database Link:	<a href="#">Entrez Gene 22809 Human Q9Y2D1</a>
Background:	Transcriptional activator which binds the cAMP response element (CRE) (consensus: 5'-GTGACGT[AC][AG]-3'), a sequence present in many viral and cellular promoters and blocks the differentiation of neuroprogenitor cells into neurons. Its transcriptional activity is enhanced by CCND3 and slightly inhibited by CDK4.
Synonyms:	ATF-5, ATRX, Activating transcription factor 5

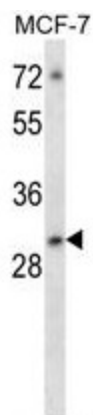


[View online »](#)

Note: **Molecular Weight:** 30674 Da

Protein Families: Transcription Factors

### Product images:



ATF5 Antibody (C-term) western blot analysis in MCF-7 cell line lysates (35ug/lane). This demonstrates the ATF5 antibody detected the ATF5 protein (arrow).