

Product datasheet for **AP50279PU-N**

ASXL1 (Center) Rabbit Polyclonal Antibody

Product data:

Product Type:	Primary Antibodies
Applications:	FC, IF, IHC, WB
Recommended Dilution:	ELISA: 1/1000. Western blotting: 1/100 - 1/500. Flow Cytometry: 1/10 - 1/50. Immunofluorescence: 1/10 - 1/50. Immunohistochemistry on Paraffin Sections: 1/50 - 1/100.
Reactivity:	Human, Mouse
Host:	Rabbit
Isotype:	Ig
Clonality:	Polyclonal
Immunogen:	KLH conjugated synthetic peptide between 521-549 amino acids from the Central region of human ASXL1
Specificity:	This antibody detects ASXL1 at Center.
Formulation:	PBS State: Aff - Purified State: Liquid purified Ig fraction Preservative: 0.09% Sodium Azide
Concentration:	lot specific
Purification:	Affinity Chromatography on Protein A
Conjugation:	Unconjugated
Storage:	Store the antibody undiluted at 2-8°C for one month or (in aliquots) at -20°C for longer. Avoid repeated freezing and thawing.
Stability:	Shelf life: one year from despatch.
Predicted Protein Size:	165448 Da
Gene Name:	additional sex combs like 1, transcriptional regulator
Database Link:	Entrez Gene 171023 Human Q8IXJ9



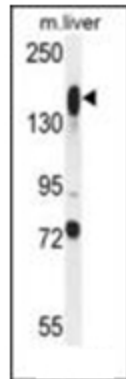
[View online »](#)

Background:

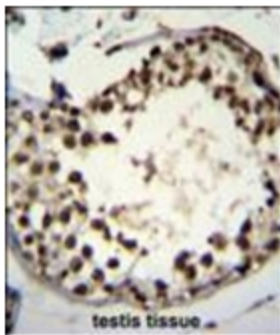
This gene is similar to the Drosophila additional sex combs gene, which encodes a chromatin-binding protein required for normal determination of segment identity in the developing embryo. The protein is a member of the Polycomb group of proteins, which are necessary for the maintenance of stable repression of homeotic and other loci. The protein is thought to disrupt chromatin in localized areas, enhancing transcription of certain genes while repressing the transcription of other genes. The protein encoded by this gene functions as a ligand-dependent co-activator for retinoic acid receptor in cooperation with nuclear receptor coactivator 1. Mutations in this gene are associated with myelodysplastic syndromes and chronic myelomonocytic leukemia. Alternative splicing results in multiple transcript variants.

Synonyms:

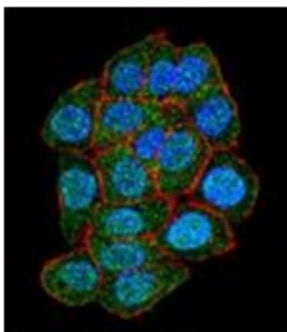
KIAA0978

Product images:

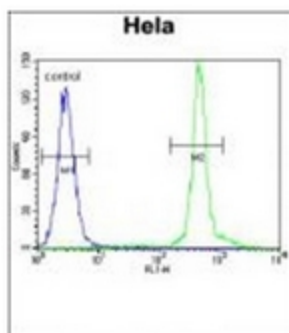
Western blot analysis in mouse liver tissue lysates (35ug/lane) using ASXL1 antibody (Center). This demonstrates the ASXL1 antibody detected the ASXL1 protein (arrow).



Immunohistochemistry analysis in formalin fixed and paraffin embedded human testis tissue using ASXL1 Antibody followed by peroxidase conjugation of the secondary antibody and DAB staining.



Confocal immunofluorescent analysis of ASXL1 Antibody (Center) with HeLa cell followed by Alexa Fluor 488-conjugated Goat anti-Rabbit IgG (green). Actin filaments have been labeled with Alexa Fluor555 phalloidin (red). DAPI was used to stain the cell nuclear (blue).



Flow Cytometric analysis of HeLa cells (Right Histogram) using ASXL1 antibody (Center) compared to a negative control cell (Left Histogram). FITC-conjugated goat-anti-rabbit secondary antibodies were used for the analysis.