

Product datasheet for **AP50278PU-N**

ASS1 (C-term) Rabbit Polyclonal Antibody

Product data:

Product Type:	Primary Antibodies
Applications:	IHC, WB
Recommended Dilution:	ELISA: 1/1000. Western blotting: 1/100 - 1/500. Immunohistochemistry on paraffin sections: 1/10 - 1/50.
Reactivity:	Human
Host:	Rabbit
Isotype:	Ig
Clonality:	Polyclonal
Immunogen:	KLH conjugated synthetic peptide between 280-310 amino acids from the C-terminal region of human ASS1
Specificity:	This antibody reacts to ASS1.
Formulation:	PBS containing 0.09% (W/V) sodium azide as preservative State: Aff - Purified State: Liquid purified Ig fraction
Concentration:	lot specific
Purification:	Affinity chromatography on Protein A
Conjugation:	Unconjugated
Storage:	Store the antibody undiluted at 2-8°C for one month or (in aliquots) at -20°C for longer. Avoid repeated freezing and thawing.
Stability:	Shelf life: one year from despatch.
Gene Name:	argininosuccinate synthase 1
Database Link:	Entrez Gene 445 Human P00966



[View online »](#)

Background: The protein encoded by this gene catalyzes the penultimate step of the arginine biosynthetic pathway. There are approximately 10 to 14 copies of this gene including the pseudogenes scattered across the human genome, among which the one located on chromosome 9 appears to be the only functional gene for argininosuccinate synthetase. Mutations in the chromosome 9 copy of ASS cause citrullinemia. Two transcript variants encoding the same protein have been found for this gene.

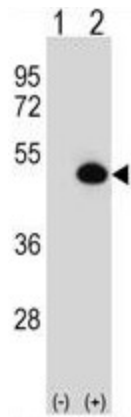
Synonyms: Argininosuccinate synthase

Note: **Molecular Weight:** 46530 Da

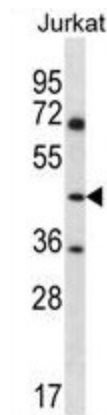
Protein Families: Druggable Genome

Protein Pathways: Alanine, aspartate and glutamate metabolism, Arginine and proline metabolism, Metabolic pathways

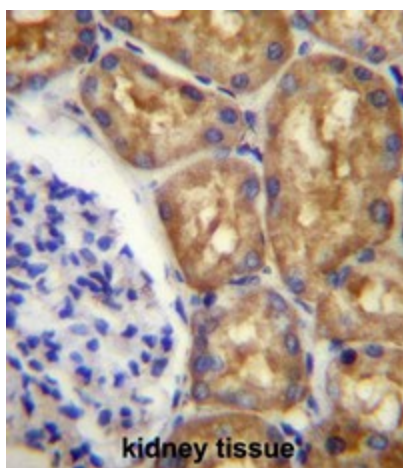
Product images:



Western blot analysis of ASS1 (arrow) using rabbit polyclonal ASS1 Antibody (C-term). 293 cell lysates (2 ug/lane) either nontransfected (Lane 1) or transiently transfected (Lane 2) with the ASS1 gene.



ASS1 Antibody (C-term) western blot analysis in Jurkat cell line lysates (35ug/lane). This demonstrates the ASS1 antibody detected the ASS1 protein (arrow).



ASS1 Antibody (C-term) immunohistochemistry analysis in formalin fixed and paraffin embedded human kidney tissue followed by peroxidase conjugation of the secondary antibody and DAB staining. This data demonstrates the use of ASS1 Antibody (C-term) for immunohistochemistry. Clinical relevance has not been evaluated.