

Product datasheet for **AP50277PU-N**

TUG (ASPSR1) (N-term) Rabbit Polyclonal Antibody

Product data:

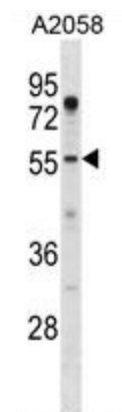
Product Type:	Primary Antibodies
Applications:	WB
Recommended Dilution:	ELISA: 1/1000. Western blotting: 1/100 - 1/500.
Reactivity:	Human
Host:	Rabbit
Isotype:	Ig
Clonality:	Polyclonal
Immunogen:	KLH conjugated synthetic peptide between 64-93 amino acids from the N-terminal region of human ASPSCR1
Specificity:	This antibody reacts to ASPSCR1.
Formulation:	PBS containing 0.09% (W/V) sodium azide as preservative State: Aff - Purified State: Liquid purified Ig fraction
Concentration:	lot specific
Purification:	Affinity chromatography on Protein A
Conjugation:	Unconjugated
Storage:	Store the antibody undiluted at 2-8°C for one month or (in aliquots) at -20°C for longer. Avoid repeated freezing and thawing.
Stability:	Shelf life: one year from despatch.
Gene Name:	ASPSR1, UBX domain containing tether for SLC2A4
Database Link:	Entrez Gene 79058 Human Q9BZE9
Background:	This gene is a candidate gene for alveolar soft part sarcoma (ASPS). It has been found that this gene is fused with transcription factor TFE3 gene in ASPS and also in renal cell carcinomas. Several alternatively spliced transcript variants of this gene have been described, but their full length nature has not been determined.
Synonyms:	ASPL, RCC17, TUG, UBXD9, UBXN9



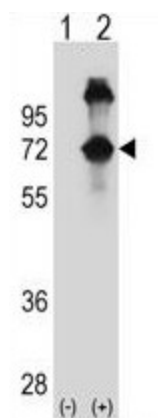
[View online »](#)

Note: **Molecular Weight:** 60183 Da

Product images:



ASPSCR1 Antibody (N-term) western blot analysis in A2058 cell line lysates (35ug/lane). This demonstrates the ASPSCR1 antibody detected the ASPSCR1 protein (arrow).



Western blot analysis of ASPSCR1 (arrow) using rabbit polyclonal ASPSCR1 Antibody (N-term). 293 cell lysates (2 ug/lane) either nontransfected (Lane 1) or transiently transfected (Lane 2) with the ASPSCR1 gene.