

Product datasheet for **AP50271PU-N**

ASCL2 (N-term) Rabbit Polyclonal Antibody

Product data:

Product Type:	Primary Antibodies
Applications:	WB
Recommended Dilution:	ELISA: >1/1000 (peptide ELISA only) Western blotting: 1/500 - 1/1000
Reactivity:	Human, Mouse
Host:	Rabbit
Isotype:	Ig
Clonality:	Polyclonal
Immunogen:	KLH conjugated synthetic peptide between 38-65 amino acids from the N-terminal region of human ASCL2
Specificity:	This antibody reacts to ASCL2.
Formulation:	PBS containing 0.09% (W/V) sodium azide as preservative State: Aff - Purified State: Liquid purified Ig fraction
Concentration:	lot specific
Purification:	Affinity chromatography on Protein A
Conjugation:	Unconjugated
Storage:	Store the antibody undiluted at 2-8°C for one month or (in aliquots) at -20°C for longer. Avoid repeated freezing and thawing.
Stability:	Shelf life: one year from despatch.
Gene Name:	achaete-scute family bHLH transcription factor 2
Database Link:	Entrez Gene 17173 Mouse Entrez Gene 430 Human Q99929
Background:	This gene is a member of the basic helix-loop-helix (BHLH) family of transcription factors. It activates transcription by binding to the E box (5'-CANNTG-3'). Dimerization with other BHLH proteins is required for efficient DNA binding. Involved in the determination of the neuronal precursors in the peripheral nervous system and the central nervous system.
Synonyms:	Achaete-scute homolog 2, Mash2, HASH2

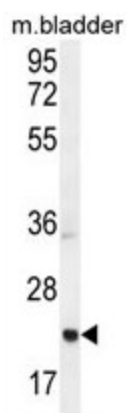


[View online »](#)

Note: **Molecular Weight:** 20185 Da

Protein Families: Druggable Genome, Transcription Factors

Product images:



ASCL2 Antibody (N-term) western blot analysis in mouse bladder tissue lysates (35ug/lane). This demonstrates the ASCL2 antibody detected the ASCL2 protein (arrow).