

## Product datasheet for **AP50268PU-N**

### ASB17 (C-term) Rabbit Polyclonal Antibody

#### Product data:

Product Type:	Primary Antibodies
Applications:	IHC, WB
Recommended Dilution:	<b>ELISA:</b> 1/1000. <b>Western blotting:</b> 1/100 - 1/500. <b>Immunohistochemistry on paraffin sections:</b> 1/50 - 1/100.
Reactivity:	Human, Mouse
Host:	Rabbit
Isotype:	Ig
Clonality:	Polyclonal
Immunogen:	KLH conjugated synthetic peptide between 184-214 amino acids from the C-terminal region of human ASB17
Specificity:	This antibody reacts to ASB17.
Formulation:	PBS containing 0.09% (W/V) sodium azide as preservative State: Aff - Purified State: Liquid purified Ig fraction
Concentration:	lot specific
Purification:	Affinity chromatography on Protein A
Conjugation:	Unconjugated
Storage:	Store the antibody undiluted at 2-8°C for one month or (in aliquots) at -20°C for longer. Avoid repeated freezing and thawing.
Stability:	Shelf life: one year from despatch.
Gene Name:	ankyrin repeat and SOCS box containing 17
Database Link:	<a href="#">Entrez Gene 66772 Mouse</a> <a href="#">Entrez Gene 127247 Human</a> <a href="#">Q8WXJ9</a>
Background:	May be a substrate-recognition component of a SCF-like ECS (Elongin-Cullin-SOCS-box protein) E3 ubiquitin-protein ligase complex which mediates the ubiquitination and subsequent proteasomal degradation of target proteins (By similarity)
Synonyms:	ASB-17

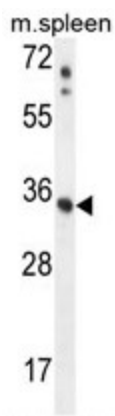


[View online »](#)

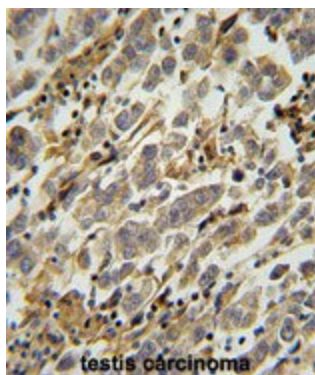
Note: **Molecular Weight:** 34282 Da

Protein Families: Druggable Genome

### Product images:



ASB17 Antibody (C-term) western blot analysis in mouse spleen tissue lysates (35ug/lane). This demonstrates the ASB17 antibody detected the ASB17 protein (arrow).



ASB17 Antibody (C-term) immunohistochemistry analysis in formalin fixed and paraffin embedded human testis carcinoma followed by peroxidase conjugation of the secondary antibody and DAB staining. This data demonstrates the use of the ASB17 Antibody (C-term) for immunohistochemistry. Clinical relevance has not been evaluated.