

Product datasheet for **AP50265PU-N**

ASAM (CLMP) (Center) Rabbit Polyclonal Antibody

Product data:

| | |
|-----------------------|---|
| Product Type: | Primary Antibodies |
| Applications: | IHC, WB |
| Recommended Dilution: | ELISA: 1/1000. Western blotting: 1/100 - 1/500. Immunohistochemistry on paraffin sections: 1/10 - 1/50. |
| Reactivity: | Human |
| Host: | Rabbit |
| Isotype: | Ig |
| Clonality: | Polyclonal |
| Immunogen: | KLH conjugated synthetic peptide between 80-111 amino acids from the Central region of human ASAM |
| Specificity: | This antibody reacts to ACAM. |
| Formulation: | PBS containing 0.09% (W/V) sodium azide as preservative State: Aff - Purified State: Liquid purified Ig fraction |
| Concentration: | lot specific |
| Purification: | Affinity chromatography on Protein A |
| Conjugation: | Unconjugated |
| Storage: | Store the antibody undiluted at 2-8°C for one month or (in aliquots) at -20°C for longer. Avoid repeated freezing and thawing. |
| Stability: | Shelf life: one year from despatch. |
| Gene Name: | CXADR-like membrane protein |
| Database Link: | Entrez Gene 79827 Human Q9H6B4 |
| Background: | The CTX (see VSIG2, MIM 606011) family of proteins, including ASAM, are type I transmembrane proteins within the Ig superfamily that localize to junctional complexes between endothelial and epithelial cells and may play a role in cell-cell adhesion (Raschperger et al., 2004 [PubMed 14573622]). [supplied by OMIM] |



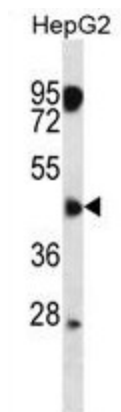
[View online »](#)

Synonyms: CLMP

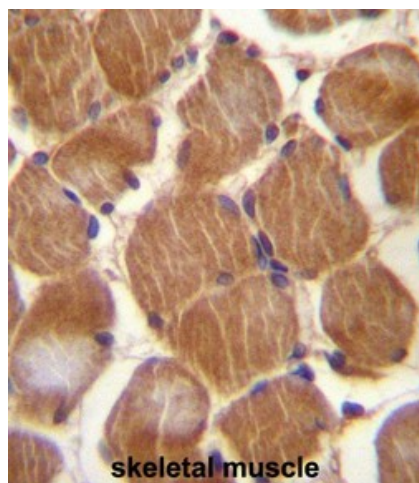
Note: **Molecular Weight:** 41281 Da

Protein Families: Transmembrane

Product images:



ASAM Antibody (Center) western blot analysis in HepG2 cell line lysates (35ug/lane). This demonstrates the ASAM antibody detected the ASAM protein (arrow).



ASAM Antibody (Center) immunohistochemistry analysis in formalin fixed and paraffin embedded human skeletal muscle followed by peroxidase conjugation of the secondary antibody and DAB staining. This data demonstrates the use of ASAM Antibody (Center) for immunohistochemistry. Clinical relevance has not been evaluated.