

Product datasheet for **AP50264PU-N**

ARX (N-term) Rabbit Polyclonal Antibody

Product data:

| | |
|-----------------------|---|
| Product Type: | Primary Antibodies |
| Applications: | WB |
| Recommended Dilution: | ELISA: 1/1000. Western blotting: 1/100 - 1/500. |
| Reactivity: | Human |
| Host: | Rabbit |
| Isotype: | Ig |
| Clonality: | Polyclonal |
| Immunogen: | KLH conjugated synthetic peptide between 39-69 amino acids from the N-terminal region of human ARX |
| Specificity: | This antibody reacts to ARX. |
| Formulation: | PBS containing 0.09% (W/V) sodium azide as preservative State: Aff - Purified State: Liquid purified Ig fraction |
| Concentration: | lot specific |
| Purification: | Affinity chromatography on Protein A |
| Conjugation: | Unconjugated |
| Storage: | Store the antibody undiluted at 2-8°C for one month or (in aliquots) at -20°C for longer. Avoid repeated freezing and thawing. |
| Stability: | Shelf life: one year from despatch. |
| Gene Name: | aristaless related homeobox |
| Database Link: | Entrez Gene 170302 Human Q96QS3 |



[View online »](#)

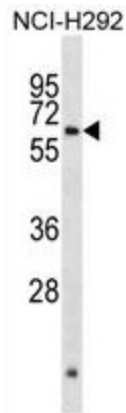
Background: This gene is a homeobox-containing gene expressed during development. The expressed protein contains two conserved domains, a C-peptide (or aristaless domain) and the prd-like class homeobox domain. It is a member of the group-II aristaless-related protein family whose members are expressed primarily in the central and/or peripheral nervous system. This gene is thought to be involved in CNS development. Mutations in this gene cause X-linked mental retardation and epilepsy.

Synonyms: Homeobox protein ARX

Note: **Molecular Weight:** 58160 Da

Protein Families: Transcription Factors

Product images:



ARX Antibody (N-term) western blot analysis in NCI-H292 cell line lysates (35ug/lane). This demonstrates the ARX antibody detected the ARX protein (arrow).