

Product datasheet for **AP50263PU-N**

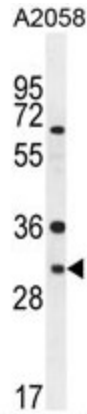
ARV1 (N-term) Rabbit Polyclonal Antibody

Product data:

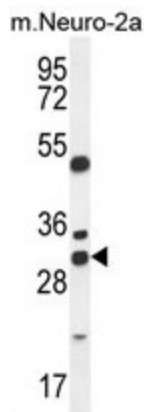
Product Type:	Primary Antibodies
Applications:	FC, IHC, WB
Recommended Dilution:	Western blotting: 1/1000. Immunohistochemistry on paraffin sections: 1/50 - 1/100. Flow Cytometry: 1/10 - 1/50.
Reactivity:	Bovine, Human, Mouse
Host:	Rabbit
Isotype:	Ig
Clonality:	Polyclonal
Immunogen:	KLH conjugated synthetic peptide between 23-51 amino acids from the N-terminal region of human ARV1.
Specificity:	This antibody reacts to ARV1.
Formulation:	PBS containing 0.09% (W/V) sodium azide as preservative State: Aff - Purified State: Liquid purified Ig fraction
Concentration:	lot specific
Purification:	Affinity chromatography on Protein A
Conjugation:	Unconjugated
Storage:	Store the antibody undiluted at 2-8°C for one month or (in aliquots) at -20°C for longer. Avoid repeated freezing and thawing.
Stability:	Shelf life: one year from despatch.
Gene Name:	ARV1 homolog, fatty acid homeostasis modulator
Database Link:	Entrez Gene 64801 Human Q9H2C2
Synonyms:	Protein ARV1, hARV1
Note:	Molecular Weight: 31052 Da
Protein Families:	Transmembrane



[View online »](#)

Product images:


ARV1 Antibody (N-term) western blot analysis in A2058 cell line lysates (35ug/lane). This demonstrates the ARV1 antibody detected the ARV1 protein (arrow).



ARV1 Antibody (N-term) western blot analysis in mouse Neuro-2a cell line lysates (35ug/lane). This demonstrates the ARV1 antibody detected the ARV1 protein (arrow).



ARV1 antibody (N-term) immunohistochemistry analysis in formalin fixed and paraffin embedded human skeletal muscle followed by peroxidase conjugation of the secondary antibody and DAB staining. This data demonstrates the use of the ARV1 antibody (N-term) for immunohistochemistry. Clinical relevance has not been evaluated.