

## Product datasheet for **AP50262PU-N**

### ARSI (C-term) Rabbit Polyclonal Antibody

#### Product data:

Product Type:	Primary Antibodies
Applications:	FC, WB
Recommended Dilution:	<b>ELISA:</b> 1/1000. <b>Western blotting:</b> 1/100 - 1/500. <b>Flow cytometric:</b> 1/10 - 1/50.
Reactivity:	Human
Host:	Rabbit
Isotype:	Ig
Clonality:	Polyclonal
Immunogen:	KLH conjugated synthetic peptide between 461~491 amino acids from the C-terminal region of human ARSI
Specificity:	This antibody reacts to ARSI.
Formulation:	PBS containing 0.09% (W/V) sodium azide as preservative State: Aff - Purified State: Liquid purified Ig fraction
Concentration:	lot specific
Purification:	Affinity chromatography on Protein A
Conjugation:	Unconjugated
Storage:	Store the antibody undiluted at 2-8°C for one month or (in aliquots) at -20°C for longer. Avoid repeated freezing and thawing.
Stability:	Shelf life: one year from despatch.
Gene Name:	arylsulfatase family member I
Database Link:	<a href="#">Entrez Gene 340075 Human Q5FYB1</a>
Background:	Sulfatases (EC 3.1.5.6), such as ARSI, hydrolyze sulfate esters from sulfated steroids, carbohydrates, proteoglycans, and glycolipids. They are involved in hormone biosynthesis, modulation of cell signaling, and degradation of macromolecules.
Synonyms:	ARSI

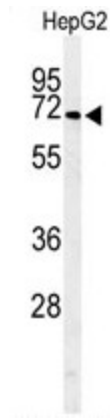


[View online »](#)

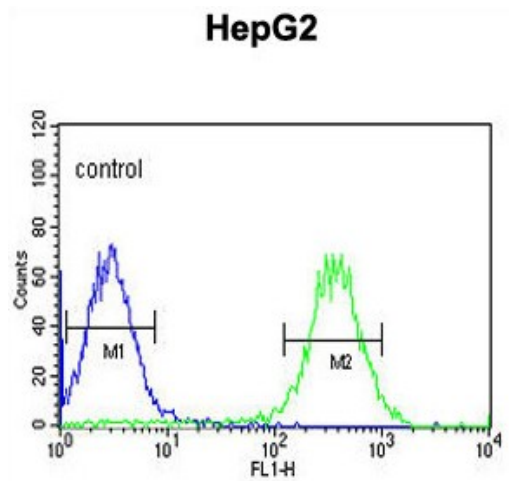
**Note:** **Molecular Weight:** 64030 Da

**Protein Families:** Druggable Genome, Secreted Protein

**Product images:**



Western blot analysis of ARSI Antibody (C-term) in HepG2 cell line lysates (35ug/lane). ARSI (arrow) was detected using the purified Pab.



ARSI Antibody (C-term) flow cytometric analysis of HepG2 cells (right histogram) compared to a negative control cell (left histogram). FITC-conjugated goat-anti-rabbit secondary antibodies were used for the analysis.