

Product datasheet for **AP50261PU-N**

Arylsulfatase D (ARSD) (C-term) Rabbit Polyclonal Antibody

Product data:

Product Type:	Primary Antibodies
Applications:	WB
Recommended Dilution:	ELISA: 1/1000. Western blotting: 1/100 - 1/500.
Reactivity:	Human
Host:	Rabbit
Isotype:	Ig
Clonality:	Polyclonal
Immunogen:	KLH conjugated synthetic peptide between 501-532 amino acids from the C-terminal region of human ARSD
Specificity:	This antibody reacts to Arylsulfatase D.
Formulation:	PBS containing 0.09% (W/V) sodium azide as preservative State: Aff - Purified State: Liquid purified Ig fraction
Concentration:	lot specific
Purification:	Affinity chromatography on Protein A
Conjugation:	Unconjugated
Storage:	Store the antibody undiluted at 2-8°C for one month or (in aliquots) at -20°C for longer. Avoid repeated freezing and thawing.
Stability:	Shelf life: one year from despatch.
Gene Name:	arylsulfatase D
Database Link:	Entrez Gene 414 Human P51689
Background:	The protein encoded by this gene is a member of the sulfatase family. Sulfatases are essential for the correct composition of bone and cartilage matrix. This encoded protein is postranslationally glycosylated and localized to the lysosome. Two transcript variants encoding different isoforms have been found for this gene.
Synonyms:	ASD, ARSD

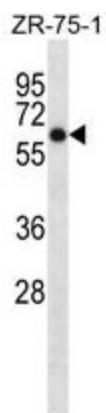


[View online »](#)

Note: **Molecular Weight:** 64860 Da

Protein Families: Druggable Genome, Transmembrane

Product images:



ARSD Antibody (C-term) western blot analysis in ZR-75-1 cell line lysates (35ug/lane). This demonstrates the ARSD antibody detected the ARSD protein (arrow).