

## Product datasheet for **AP50260PU-N**

### ARRDC5 (N-term) Rabbit Polyclonal Antibody

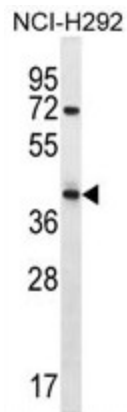
#### Product data:

Product Type:	Primary Antibodies
Applications:	WB
Recommended Dilution:	<b>ELISA:</b> 1/1000. <b>Western blotting:</b> 1/100 - 1/500.
Reactivity:	Human
Host:	Rabbit
Isotype:	Ig
Clonality:	Polyclonal
Immunogen:	KLH conjugated synthetic peptide between 70-99 amino acids from the N-terminal region of human ARRDC5
Specificity:	This antibody reacts to ARRDC5.
Formulation:	PBS containing 0.09% (W/V) sodium azide as preservative State: Aff - Purified State: Liquid purified Ig fraction
Concentration:	lot specific
Purification:	Affinity chromatography on Protein A
Conjugation:	Unconjugated
Storage:	Store the antibody undiluted at 2-8°C for one month or (in aliquots) at -20°C for longer. Avoid repeated freezing and thawing.
Stability:	Shelf life: one year from despatch.
Gene Name:	arrestin domain containing 5
Database Link:	<a href="#">Entrez Gene 645432 Human A6NEK1</a>
Synonyms:	Arrestin domain-containing protein 5
Note:	<b>Molecular Weight:</b> 36841 Da



[View online »](#)

## Product images:



ARRDC5 Antibody (N-term) western blot analysis in NCI-H292 cell line lysates (35ug/lane). This demonstrates the ARRDC5 antibody detected the ARRDC5 protein (arrow).