

## Product datasheet for **AP50257PU-N**

### ARRDC1 (Center) Rabbit Polyclonal Antibody

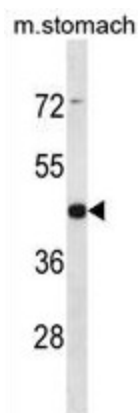
#### Product data:

Product Type:	Primary Antibodies
Applications:	WB
Recommended Dilution:	<b>ELISA:</b> 1/1000. <b>Western blotting:</b> 1/100 - 1/500.
Reactivity:	Human, Mouse
Host:	Rabbit
Isotype:	Ig
Clonality:	Polyclonal
Immunogen:	KLH conjugated synthetic peptide between 135-164 amino acids from the Central region of human ARRDC1
Specificity:	This antibody reacts to ARRDC1.
Formulation:	PBS containing 0.09% (W/V) sodium azide as preservative State: Aff - Purified State: Liquid purified Ig fraction
Concentration:	lot specific
Purification:	Affinity chromatography on Protein A
Conjugation:	Unconjugated
Storage:	Store the antibody undiluted at 2-8°C for one month or (in aliquots) at -20°C for longer. Avoid repeated freezing and thawing.
Stability:	Shelf life: one year from despatch.
Gene Name:	arrestin domain containing 1
Database Link:	<a href="#">Entrez Gene 215705 Mouse</a> <a href="#">Entrez Gene 92714 Human</a> <a href="#">Q8N5I2</a>
Background:	ARRDC1 belongs to the arrestin family of proteins.
Synonyms:	MGC40555
Note:	<b>Molecular Weight:</b> 45981 Da



[View online »](#)

## Product images:



ARRDC1 Antibody (Center) western blot analysis in mouse stomach tissue lysates (35ug/lane). This demonstrates the ARRDC1 antibody detected the ARRDC1 protein (arrow).