

Product datasheet for **AP50254PU-N**

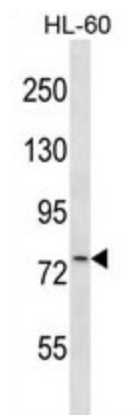
ARPP21 (N-term) Rabbit Polyclonal Antibody

Product data:

Product Type:	Primary Antibodies
Applications:	WB
Recommended Dilution:	ELISA: 1/1000. Western blotting: 1/100 - 1/500.
Reactivity:	Human
Host:	Rabbit
Isotype:	Ig
Clonality:	Polyclonal
Immunogen:	KLH conjugated synthetic peptide between 84-114 amino acids from the N-terminal region of human ARPP-21
Specificity:	This antibody reacts to ARPP21.
Formulation:	PBS containing 0.09% (W/V) sodium azide as preservative State: Aff - Purified State: Liquid purified Ig fraction
Concentration:	lot specific
Purification:	Affinity chromatography on Protein A
Conjugation:	Unconjugated
Storage:	Store the antibody undiluted at 2-8°C for one month or (in aliquots) at -20°C for longer. Avoid repeated freezing and thawing.
Stability:	Shelf life: one year from despatch.
Gene Name:	Homo sapiens cAMP regulated phosphoprotein 21 (ARPP21), transcript variant 3
Database Link:	Entrez Gene 10777 Human Q9UBL0
Synonyms:	ARPP-21
Note:	Molecular Weight: 89196 Da



[View online »](#)

Product images:

ARPP-21 Antibody (N-term) western blot analysis in HL-60 cell line lysates (35ug/lane). This demonstrates the ARPP-21 antibody detected the ARPP-21 protein (arrow).