

Product datasheet for **AP50249PU-N**

ARMCX1 (Center) Rabbit Polyclonal Antibody

Product data:

Product Type:	Primary Antibodies
Applications:	WB
Recommended Dilution:	ELISA: 1/1000. Western blotting: 1/100 - 1/500.
Reactivity:	Human
Host:	Rabbit
Isotype:	Ig
Clonality:	Polyclonal
Immunogen:	KLH conjugated synthetic peptide between 238-268 amino acids from the Central region of human ARMCX1
Specificity:	This antibody reacts to ARMCX1.
Formulation:	PBS containing 0.09% (W/V) sodium azide as preservative State: Aff - Purified State: Liquid purified Ig fraction
Concentration:	lot specific
Purification:	Affinity chromatography on Protein A
Conjugation:	Unconjugated
Storage:	Store the antibody undiluted at 2-8°C for one month or (in aliquots) at -20°C for longer. Avoid repeated freezing and thawing.
Stability:	Shelf life: one year from despatch.
Gene Name:	armadillo repeat containing, X-linked 1
Database Link:	Entrez Gene 51309 Human Q9P291
Background:	ARMCX1 is a member of the ALEX family of proteins and may play a role in tumor suppression. The encoded protein contains a potential N-terminal transmembrane domain and two Armadillo (arm) repeats. Other proteins containing the arm repeat are involved in development, maintenance of tissue integrity, and tumorigenesis. This gene is closely localized with other family members, including ALEX2 and ALEX3, on the X chromosome.



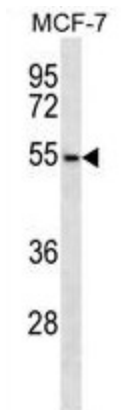
[View online »](#)

Synonyms: AD032

Note: **Molecular Weight:** 49180 Da

Protein Families: Transmembrane

Product images:



ARMCX1 Antibody (Center) western blot analysis in MCF-7 cell line lysates (35ug/lane). This demonstrates the ARMCX1 antibody detected the ARMCX1 protein (arrow).