

Product datasheet for **AP50248PU-N**

ARL8A (Center) Rabbit Polyclonal Antibody

Product data:

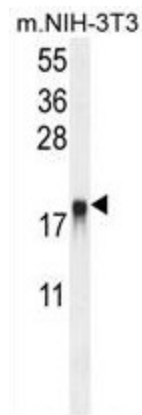
Product Type:	Primary Antibodies
Applications:	FC, IHC, WB
Recommended Dilution:	ELISA: 1/1000. Western blotting: 1/100 - 1/500. Immunohistochemistry on paraffin sections: 1/50 - 1/100. Flow Cytometry: 1/10 - 1/50.
Reactivity:	Human, Mouse
Host:	Rabbit
Isotype:	Ig
Clonality:	Polyclonal
Immunogen:	KLH conjugated synthetic peptide between 123-150 amino acids from the Central region of human ARL8A
Specificity:	This antibody reacts to ARL8A.
Formulation:	PBS containing 0.09% (W/V) sodium azide as preservative State: Aff - Purified State: Liquid purified Ig fraction
Concentration:	lot specific
Purification:	Affinity chromatography on Protein A
Conjugation:	Unconjugated
Storage:	Store the antibody undiluted at 2-8°C for one month or (in aliquots) at -20°C for longer. Avoid repeated freezing and thawing.
Stability:	Shelf life: one year from despatch.
Gene Name:	ADP ribosylation factor like GTPase 8A
Database Link:	Entrez Gene 68724 Mouse Entrez Gene 127829 Human Q96BM9
Synonyms:	GIE2
Note:	Molecular Weight: 21416 Da



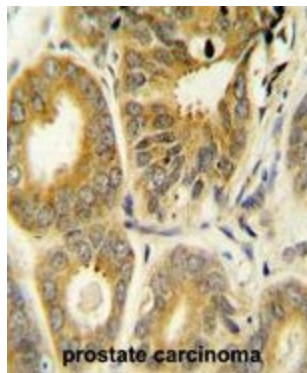
[View online »](#)

Product images:

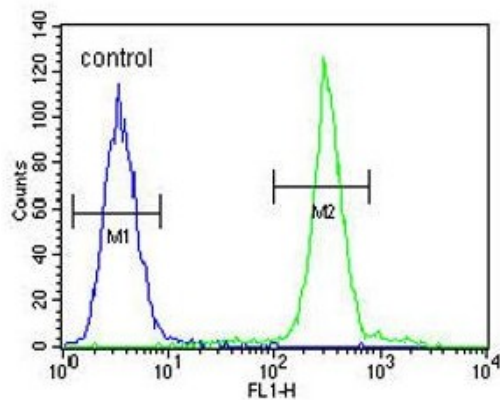

ARL8A Antibody (Center) western blot analysis in A375 cell line lysates (35ug/lane). This demonstrates the ARL8A antibody detected the ARL8A protein (arrow).



ARL8A Antibody (Center) western blot analysis in mouse NIH-3T3 cell line lysates (35ug/lane). This demonstrates the ARL8A antibody detected the ARL8A protein (arrow).



ARL8A Antibody (Center) immunohistochemistry analysis in formalin fixed and paraffin embedded human prostate carcinoma followed by peroxidase conjugation of the secondary antibody and DAB staining. This data demonstrates the use of the ARL8A Antibody (Center) for immunohistochemistry. Clinical relevance has not been evaluated.

A375

ARL8A Antibody (Center) flow cytometric analysis of A375 cells (right histogram) compared to a negative control cell (left histogram). FITC-conjugated goat-anti-rabbit secondary antibodies were used for the analysis.