

Product datasheet for **AP50247PU-N**

ARL5B (C-term) Rabbit Polyclonal Antibody

Product data:

Product Type:	Primary Antibodies
Applications:	FC, IHC, WB
Recommended Dilution:	ELISA: 1/1000. Western blotting: 1/50 - 1/100. Immunohistochemistry on paraffin sections: 1/50 - 1/100. Flow Cytometry: 1/10 - 1/50.
Reactivity:	Human
Host:	Rabbit
Isotype:	Ig
Clonality:	Polyclonal
Immunogen:	KLH conjugated synthetic peptide between 129-161 amino acids from the C-terminal region of human ARL8
Specificity:	This antibody reacts to ARL5B.
Formulation:	PBS containing 0.09% (W/V) sodium azide as preservative State: Purified State: Liquid purified Ig fraction
Concentration:	lot specific
Purification:	Affinity chromatography on Protein A
Conjugation:	Unconjugated
Storage:	Store the antibody undiluted at 2-8°C for one month or (in aliquots) at -20°C for longer. Avoid repeated freezing and thawing.
Stability:	Shelf life: one year from despatch.
Gene Name:	ADP ribosylation factor like GTPase 5B
Database Link:	Entrez Gene 221079 Human Q96KC2
Background:	ARL5B (ARL8) belongs to a family of proteins that are structurally similar to ADP-ribosylation factors (ARFs; see MIM 103180). ARLs and ARFs are part of the RAS superfamily of regulatory GTPases.



[View online »](#)

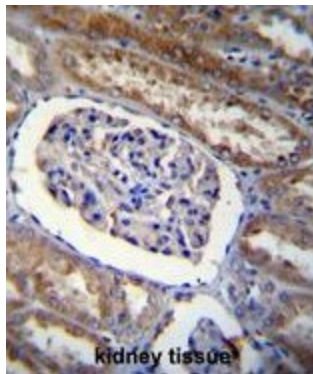
Synonyms: ARL8

Note: **Molecular Weight:** 20375 Da

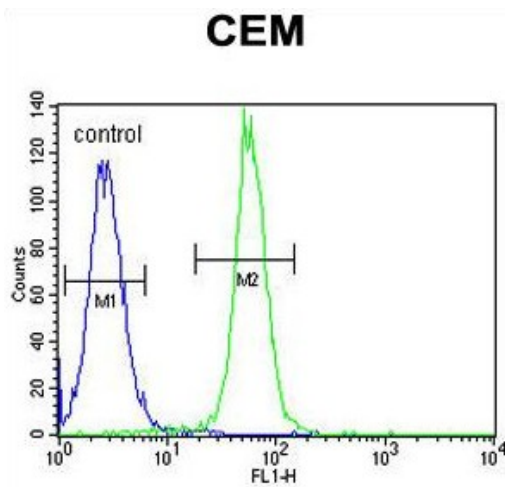
Product images:



ARL8 Antibody (C-term) western blot analysis in CEM cell line lysates (35ug/lane). This demonstrates the ARL8 antibody detected the ARL8 protein (arrow).



ARL8 Antibody (C-term) immunohistochemistry analysis in formalin fixed and paraffin embedded human kidney tissue followed by peroxidase conjugation of the secondary antibody and DAB staining. This data demonstrates the use of ARL8 Antibody (C-term) for immunohistochemistry. Clinical relevance has not been evaluated.



ARL8 Antibody (C-term) flow cytometric analysis of CEM cells (right histogram) compared to a negative control cell (left histogram). FITC-conjugated goat-anti-rabbit secondary antibodies were used for the analysis.