

## Product datasheet for **AP50246PU-N**

### **ARMER (ARL6IP1) (N-term) Rabbit Polyclonal Antibody**

#### **Product data:**

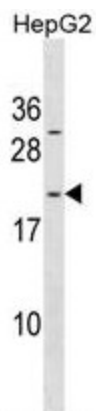
Product Type:	Primary Antibodies
Applications:	WB
Recommended Dilution:	<b>ELISA:</b> 1/1000. <b>Western blotting:</b> 1/100 - 1/500.
Reactivity:	Human
Host:	Rabbit
Isotype:	Ig
Clonality:	Polyclonal
Immunogen:	KLH conjugated synthetic peptide between 1-30 amino acids from the N-terminal region of human ARL6IP1
Specificity:	This antibody reacts to ARL6IP1.
Formulation:	PBS containing 0.09% (W/V) sodium azide as preservative State: Aff - Purified State: Liquid purified Ig fraction
Concentration:	lot specific
Purification:	Affinity chromatography on Protein A
Conjugation:	Unconjugated
Storage:	Store the antibody undiluted at 2-8°C for one month or (in aliquots) at -20°C for longer. Avoid repeated freezing and thawing.
Stability:	Shelf life: one year from despatch.
Gene Name:	ADP ribosylation factor like GTPase 6 interacting protein 1
Database Link:	<a href="#">Entrez Gene 23204 Human Q15041</a>
Background:	ARL6IP1 may be involved in protein transport, membrane trafficking, or cell signaling during hematopoietic maturation.
Synonyms:	KIAA0069, ARL-6-interacting protein 1, Aip-1
Note:	<b>Molecular Weight:</b> 23363 Da



[View online »](#)

Protein Families: Transmembrane

### Product images:



ARL6IP1 Antibody (N-term) western blot analysis in HepG2 cell line lysates (35ug/lane). This demonstrates the ARL6IP1 antibody detected the ARL6IP1 protein (arrow).