

Product datasheet for **AP50245PU-N**

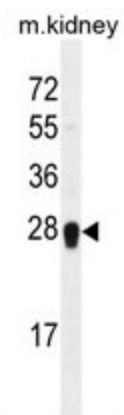
ARL5C (N-term) Rabbit Polyclonal Antibody

Product data:

Product Type:	Primary Antibodies
Applications:	WB
Recommended Dilution:	ELISA: 1/1000. Western blotting: 1/100 - 1/500.
Reactivity:	Human, Mouse
Host:	Rabbit
Isotype:	Ig
Clonality:	Polyclonal
Immunogen:	KLH conjugated synthetic peptide between 41-69 amino acids from the N-terminal region of human ARL5C
Specificity:	This antibody reacts to ARL5C.
Formulation:	PBS containing 0.09% (W/V) sodium azide as preservative State: Aff - Purified State: Liquid purified Ig fraction
Concentration:	lot specific
Purification:	Affinity chromatography on Protein A
Conjugation:	Unconjugated
Storage:	Store the antibody undiluted at 2-8°C for one month or (in aliquots) at -20°C for longer. Avoid repeated freezing and thawing.
Stability:	Shelf life: one year from despatch.
Gene Name:	ADP ribosylation factor like GTPase 5C
Database Link:	Entrez Gene 390790 Human A6NH57
Synonyms:	Putative ADP-ribosylation factor-like protein 5C,ARL12
Note:	Molecular Weight: 20591 Da



[View online »](#)

Product images:

ARL5C Antibody (N-term) western blot analysis in mouse kidney tissue lysates (35ug/lane). This demonstrates the ARL5C antibody detected the ARL5C protein (arrow).