

## Product datasheet for **AP50244PU-N**

### ARL2 (Center) Rabbit Polyclonal Antibody

#### Product data:

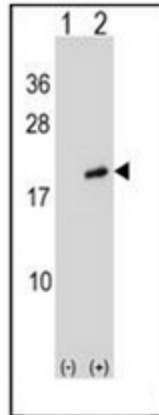
Product Type:	Primary Antibodies
Applications:	WB
Recommended Dilution:	<b>ELISA:</b> 1/1000. <b>Western blotting:</b> 1/100-1/500.
Reactivity:	Human
Host:	Rabbit
Isotype:	Ig
Clonality:	Polyclonal
Immunogen:	KLH conjugated synthetic peptide between 53-82 amino acids from the Central region of human ARL2.
Specificity:	This antibody recognizes Human ARL2 (Center).
Formulation:	PBS containing 0.09% (W/V) Sodium Azide as preservative State: Aff - Purified State: Liquid purified Ig fraction
Concentration:	lot specific
Purification:	Protein A column, followed by peptide affinity purification
Conjugation:	Unconjugated
Storage:	Store undiluted at 2-8°C for one month or (in aliquots) at -20°C for longer. Avoid repeated freezing and thawing.
Stability:	Shelf life: one year from despatch.
Gene Name:	ADP ribosylation factor like GTPase 2
Database Link:	<a href="#">Entrez Gene 402 Human P36404</a>
Background:	This gene encodes a small GTP-binding protein of the RAS superfamily which functions as an ADP-ribosylation factor (ARF). The encoded protein is one of a functionally distinct group of ARF-like genes.
Synonyms:	ARFL2



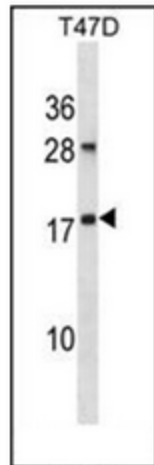
[View online »](#)

Note: **Molecular Weight:** 20878 Da

**Product images:**



Western blot analysis of ARL2 (arrow) using ARL2 Antibody (Center). 293 cell lysates (2 ug/lane) either nontransfected (Lane 1) or transiently transfected (Lane 2) with the ARL2 gene.



Western blot analysis of ARL2 Antibody (Center) in T47D cell line lysates (35ug/lane). This demonstrates the ARL2 antibody detected the ARL2 protein (arrow).