

Product datasheet for **AP50243PU-N**

ARL17B (Center) Rabbit Polyclonal Antibody

Product data:

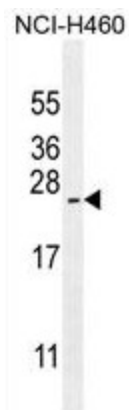
Product Type:	Primary Antibodies
Applications:	IHC, WB
Recommended Dilution:	ELISA: 1/1000. Western blotting: 1/100 - 1/500. Immunohistochemistry on paraffin sections: 1/50 - 1/100.
Reactivity:	Human
Host:	Rabbit
Isotype:	Ig
Clonality:	Polyclonal
Immunogen:	KLH conjugated synthetic peptide between 109-139 amino acids from the Central region of human ARL17P1
Specificity:	This antibody reacts to ARL17P1.
Formulation:	PBS containing 0.09% (W/V) sodium azide as preservative State: Aff - Purified State: Liquid purified Ig fraction
Concentration:	lot specific
Purification:	Affinity chromatography on Protein A
Conjugation:	Unconjugated
Storage:	Store the antibody undiluted at 2-8°C for one month or (in aliquots) at -20°C for longer. Avoid repeated freezing and thawing.
Stability:	Shelf life: one year from despatch.
Gene Name:	ADP ribosylation factor like GTPase 17B
Database Link:	Entrez Gene 100506084 Human Q8IVW1
Background:	GTP-binding protein that functions as an allosteric activator of the cholera toxin catalytic subunit, an ADP-ribosyltransferase. Involved in protein trafficking; may modulate vesicle budding and uncoating within the Golgi apparatus (By similarity).
Synonyms:	ARL17A, ARL17P1, ADP-ribosylation factor 7 variant, ADP-ribosylation factor-like protein 17



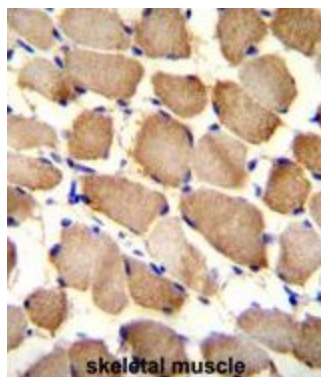
[View online »](#)

Note: **Molecular Weight:** 19388 Da

Product images:



ARL17P1 Antibody (Center) western blot analysis in NCI-H460 cell line lysates (35ug/lane). This demonstrates the ARL17P1 antibody detected the ARL17P1 protein (arrow).



ARL17P1 Antibody (Center) immunohistochemistry analysis in formalin fixed and paraffin embedded human skeletal muscle followed by peroxidase conjugation of the secondary antibody and DAB staining. This data demonstrates the use of ARL17P1 Antibody (Center) for immunohistochemistry. Clinical relevance has not been evaluated.