

Product datasheet for **AP50241PU-N**

ARL 1 (ARL1) (Center) Rabbit Polyclonal Antibody

Product data:

Product Type:	Primary Antibodies
Applications:	WB
Recommended Dilution:	ELISA: 1/1000. Western blotting: 1/100 - 1/500.
Reactivity:	Human
Host:	Rabbit
Isotype:	Ig
Clonality:	Polyclonal
Immunogen:	KLH conjugated synthetic peptide between 80-108 amino acids from the Central region of human ARL1
Specificity:	This antibody reacts to ARL1.
Formulation:	PBS containing 0.09% (W/V) sodium azide as preservative State: Aff - Purified State: Liquid purified Ig fraction
Concentration:	lot specific
Purification:	Affinity chromatography on Protein A
Conjugation:	Unconjugated
Storage:	Store the antibody undiluted at 2-8°C for one month or (in aliquots) at -20°C for longer. Avoid repeated freezing and thawing.
Stability:	Shelf life: one year from despatch.
Gene Name:	ADP ribosylation factor like GTPase 1
Database Link:	Entrez Gene 400 Human P40616



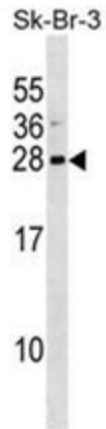
[View online »](#)

Background:

The protein encoded by this gene belongs to the ARL (ADP-ribosylation factor-like) family of proteins, which are structurally related to ADP-ribosylation factors (ARFs). ARFs, described as activators of cholera toxin (CT) ADP-ribosyltransferase activity, regulate intracellular vesicular membrane trafficking, and stimulate a phospholipase D (PLD) isoform. Although, ARL proteins were initially thought not to activate CT or PLD, later work showed that they are weak stimulators of PLD and CT in a phospholipid dependent manner.

Synonyms:

ARFL1

Note:**Molecular Weight:** 20418 Da**Product images:**

ARL1 Antibody (Center) western blot analysis in SK-BR-3 cell line lysates (35ug/lane). This demonstrates the ARL1 antibody detected the ARL1 protein (arrow).