

Product datasheet for **AP50239PU-N**

ARHGEF6 (C-term) Rabbit Polyclonal Antibody

Product data:

Product Type:	Primary Antibodies
Applications:	WB
Recommended Dilution:	ELISA: 1/1,000. Western blotting: 1/1,000.
Reactivity:	Human
Host:	Rabbit
Isotype:	Ig
Clonality:	Polyclonal
Immunogen:	KLH conjugated synthetic peptide between 614-641 amino acids from the C-terminal region of human ARHGEF6
Specificity:	This antibody reacts to ARHGEF6.
Formulation:	PBS containing 0.09% (W/V) sodium azide as preservative State: Aff - Purified State: Liquid purified Ig fraction
Concentration:	lot specific
Purification:	Affinity chromatography on Protein A
Conjugation:	Unconjugated
Storage:	Store undiluted at 2-8°C for one month or (in aliquots) at -20°C for longer. Avoid repeated freezing and thawing.
Stability:	Shelf life: one year from despatch.
Gene Name:	Rac/Cdc42 guanine nucleotide exchange factor 6
Database Link:	Entrez Gene 9459 Human Q15052



[View online »](#)

Background:

Rho GTPases play a fundamental role in numerous cellular processes that are initiated by extracellular stimuli that work through G protein coupled receptors. The encoded protein belongs to a family of cytoplasmic proteins that activate the Ras-like family of Rho proteins by exchanging bound GDP for GTP. It may form a complex with G proteins and stimulate Rho-dependent signals. This protein is activated by PI3-kinase. Mutations in this gene can cause X-chromosomal non-specific mental retardation.

Synonyms:

COOL2, KIAA0006, PIXA, Alpha-Pix, COOL-2

Note:

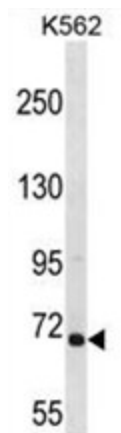
Molecular Weight: Isoform2 71kd. 87499 Da

Protein Families:

Druggable Genome

Protein Pathways:

Pancreatic cancer, Regulation of actin cytoskeleton

Product images:

ARHGEF6 Antibody (C-term) western blot analysis in K562 cell line lysates (35ug/lane). This demonstrates the ARHGEF6 antibody detected the ARHGEF6 protein (arrow).