

Product datasheet for **AP50237PU-N**

ARHGEF1 (N-term) Rabbit Polyclonal Antibody

Product data:

Product Type:	Primary Antibodies
Applications:	WB
Recommended Dilution:	ELISA: 1/1000. Western blotting: 1/100 - 1/500.
Reactivity:	Human
Host:	Rabbit
Isotype:	Ig
Clonality:	Polyclonal
Immunogen:	KLH conjugated synthetic peptide between 163-192 amino acids from the N-terminal region of human ARHGEF1
Specificity:	This antibody reacts to ARHGEF1 .
Formulation:	PBS containing 0.09% (W/V) sodium azide as preservative State: Aff - Purified State: Liquid purified Ig fraction
Concentration:	lot specific
Purification:	Affinity chromatography on Protein A
Conjugation:	Unconjugated
Storage:	Store the antibody undiluted at 2-8°C for one month or (in aliquots) at -20°C for longer. Avoid repeated freezing and thawing.
Stability:	Shelf life: one year from despatch.
Gene Name:	Rho guanine nucleotide exchange factor 1
Database Link:	Entrez Gene 9138 Human Q92888
Background:	Rho GTPases play a fundamental role in numerous cellular processes that are initiated by extracellular stimuli that work through G protein coupled receptors. The encoded protein may form complex with G proteins and stimulate Rho-dependent signals. Multiple alternatively spliced transcript variants have been found for this gene, but the full-length nature of some variants has not been defined.

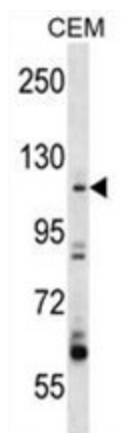


[View online »](#)

Synonyms: p115-RhoGEF, p115RhoGEF, Sub1.5

Note: **Molecular Weight:** 102435 Da

Product images:



ARHGEF1 Antibody (N-term) western blot analysis in CEM cell line lysates (35ug/lane). This demonstrates the ARHGEF1 antibody detected the ARHGEF1 protein (arrow).