

Product datasheet for **AP50235PU-N**

ARHGAP22 (C-term) Rabbit Polyclonal Antibody

Product data:

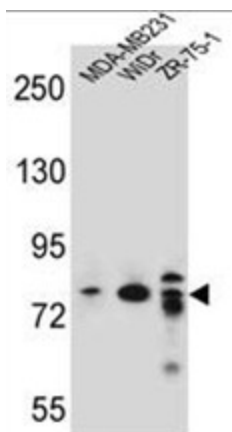
Product Type:	Primary Antibodies
Applications:	WB
Recommended Dilution:	ELISA: 1/1000. Western blotting: 1/100 - 1/500.
Reactivity:	Human
Host:	Rabbit
Isotype:	Ig
Clonality:	Polyclonal
Immunogen:	KLH conjugated synthetic peptide between 603-633 amino acids from the C-terminal region of human ARHGAP22
Specificity:	This antibody reacts to ARHGAP22.
Formulation:	PBS containing 0.09% (W/V) sodium azide as preservative State: Aff - Purified State: Liquid purified Ig fraction
Concentration:	lot specific
Purification:	Affinity chromatography on Protein A
Conjugation:	Unconjugated
Storage:	Store the antibody undiluted at 2-8°C for one month or (in aliquots) at -20°C for longer. Avoid repeated freezing and thawing.
Stability:	Shelf life: one year from despatch.
Gene Name:	Rho GTPase activating protein 22
Database Link:	Entrez Gene 58504 Human Q7Z5H3
Background:	ARHGAPs, such as ARHGAP22, encode negative regulators of Rho GTPases (see ARHA; MIM 165390), which are implicated in actin remodeling, cell polarity, and cell migration (Katoh and Katoh, 20049)
Synonyms:	Rho GTPase-activating protein 22, Rho-type GTPase-activating protein 22, p68RacGAP, RHOGAP2



[View online »](#)

Note: **Molecular Weight:** 76779 Da

Product images:



ARHGAP22 Antibody (C-term) western blot analysis in MDA-MB231, WiDr, ZR-75-1 cell line lysates (35ug/lane). This demonstrates the ARHGAP22 antibody detected the ARHGAP22 protein (arrow).