

## Product datasheet for **AP50234PU-N**

### ARHGAP17 (N-term) Rabbit Polyclonal Antibody

#### Product data:

Product Type:	Primary Antibodies
Applications:	FC, WB
Recommended Dilution:	<b>ELISA:</b> 1/1000. <b>Western blotting:</b> 1/100 - 1/500. <b>Flow Cytometry:</b> 1/10 - 1/50.
Reactivity:	Human
Host:	Rabbit
Isotype:	Ig
Clonality:	Polyclonal
Immunogen:	KLH conjugated synthetic peptide between 44-74 amino acids from the N-terminal region of human ARHGAP17
Specificity:	This antibody reacts to ARHGAP17.
Formulation:	PBS containing 0.09% (W/V) sodium azide as preservative State: Aff - Purified State: Liquid purified Ig fraction
Concentration:	lot specific
Purification:	Affinity chromatography on Protein A
Conjugation:	Unconjugated
Storage:	Store the antibody undiluted at 2-8°C for one month or (in aliquots) at -20°C for longer. Avoid repeated freezing and thawing.
Stability:	Shelf life: one year from despatch.
Gene Name:	Rho GTPase activating protein 17
Database Link:	<a href="#">Entrez Gene 55114 Human Q68EM7</a>
Background:	RICH1 is a GTPase-activating protein (GAP). GAPs stimulate the intrinsic GTP hydrolysis of small G proteins, such as RHOA (MIM 165390), RAC1 (MIM 602048), and CDC42 (MIM 116952).
Synonyms:	RICH1, MSTP066, MSTP110

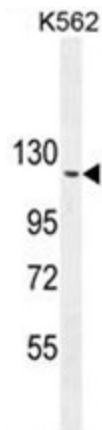


[View online »](#)

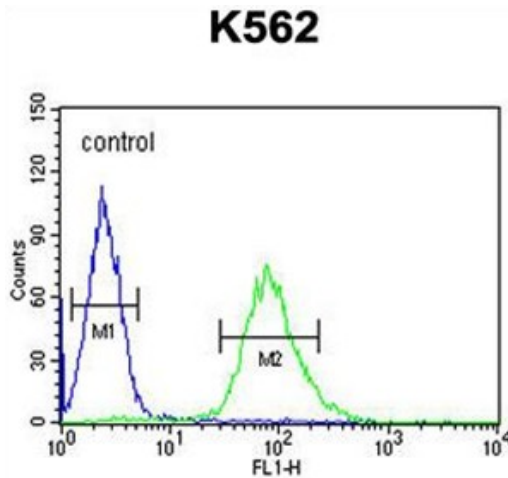
Note: **Molecular Weight:** 95437 Da

Protein Families: Druggable Genome

**Product images:**



ARHGAP17 Antibody (N-term) western blot analysis in K562 cell line lysates (35ug/lane). This demonstrates the ARHGAP17 antibody detected the ARHGAP17 protein (arrow).



ARHGAP17 Antibody (N-term) flow cytometric analysis of K562 cells (right histogram) compared to a negative control cell (left histogram). FITC-conjugated goat-anti-rabbit secondary antibodies were used for the analysis.