

## Product datasheet for **AP50232PU-N**

### **ARHGAP10 (Center) Rabbit Polyclonal Antibody**

#### **Product data:**

Product Type:	Primary Antibodies
Applications:	FC, IHC, WB
Recommended Dilution:	<b>ELISA:</b> 1/1000. <b>Western blotting:</b> 1/100 - 1/500. <b>Immunohistochemistry on paraffin sections:</b> 1/50 - 1/100. <b>Flow Cytometry:</b> 1/10 - 1/50.
Reactivity:	Human
Host:	Rabbit
Isotype:	Ig
Clonality:	Polyclonal
Immunogen:	KLH conjugated synthetic peptide between 240-267 amino acids from the Central region of human ARHGAP10
Specificity:	This antibody reacts to ARHGAP10.
Formulation:	PBS containing 0.09% (W/V) sodium azide as preservative State: Aff - Purified State: Liquid purified Ig fraction
Concentration:	lot specific
Purification:	Affinity chromatography on Protein A
Conjugation:	Unconjugated
Storage:	Store the antibody undiluted at 2-8°C for one month or (in aliquots) at -20°C for longer. Avoid repeated freezing and thawing.
Stability:	Shelf life: one year from despatch.
Gene Name:	Rho GTPase activating protein 10
Database Link:	<a href="#">Entrez Gene 79658 Human A1A4S6</a>



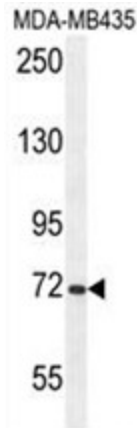
[View online »](#)

**Background:** GTPase activator for the small GTPases RhoA and Cdc42 by converting them to an inactive GDP-bound state. Essential for PTKB2 regulation of cytoskeletal organization via Rho family GTPases. Inhibits PAK2 proteolytic fragment PAK-2p34 kinase activity and changes its localization from the nucleus to the perinuclear region. Stabilizes PAK-2p34 thereby increasing stimulation of cell death (By similarity).

**Synonyms:** Graf-related protein 2

**Note:** **Molecular Weight:** 89375 Da

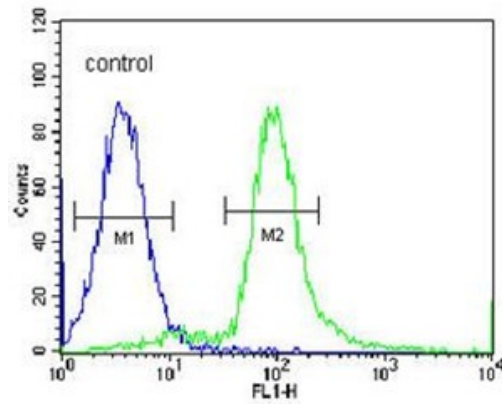
**Product images:**



ARHGAP10 Antibody (Center) western blot analysis in MDA-MB435 cell line lysates (35ug/lane). This demonstrates the ARHGAP10 antibody detected the ARHGAP10 protein (arrow).



ARHGAP10 antibody (Center) immunohistochemistry analysis in formalin fixed and paraffin embedded human skeletal muscle followed by peroxidase conjugation of the secondary antibody and DAB staining. This data demonstrates the use of the ARHGAP10 antibody (Center) for immunohistochemistry. Clinical relevance has not been evaluated.

**MDA-MB435**

ARHGAP10 Antibody (Center) flow cytometric analysis of MDA-MB435 cells (right histogram) compared to a negative control cell (left histogram). FITC-conjugated goat-anti-rabbit secondary antibodies were used for the analysis.