

Product datasheet for **AP50230PU-N**

RHOB (Center) Rabbit Polyclonal Antibody

Product data:

Product Type:	Primary Antibodies
Applications:	IHC, WB
Recommended Dilution:	ELISA: 1/1000. Western blotting: 1/50 - 1/100. Immunohistochemistry: 1/10 - 1/50.
Reactivity:	Human
Host:	Rabbit
Isotype:	Ig
Clonality:	Polyclonal
Immunogen:	KLH conjugated synthetic peptide between 103-137 amino acids from the Central region of human ARHB
Specificity:	This antibody reacts to RhoB.
Formulation:	PBS containing 0.09% (W/V) sodium azide as preservative State: Purified State: Liquid purified Ig fraction
Concentration:	lot specific
Purification:	Saturated Ammonium Sulfate (SAS) precipitation
Conjugation:	Unconjugated
Storage:	Store the antibody undiluted at 2-8°C for one month or (in aliquots) at -20°C for longer. Avoid repeated freezing and thawing.
Stability:	Shelf life: one year from despatch.
Gene Name:	ras homolog family member B
Database Link:	Entrez Gene 388 Human P62745



[View online »](#)

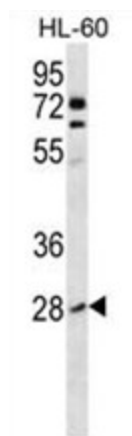
Background: ARHB mediates apoptosis in neoplastically transformed cells after DNA damage. Not essential for development but affects cell adhesion and growth factor signaling in transformed cells. Plays a negative role in tumorigenesis as deletion causes tumor formation. Involved in intracellular protein trafficking of a number of proteins. Targets PKN1 to endosomes and is involved in trafficking of the EGF receptor from late endosomes to lysosomes. Also required for stability and nuclear trafficking of AKT1/AKT which promotes endothelial cell survival during vascular development.

Synonyms: ARH6, ARHB

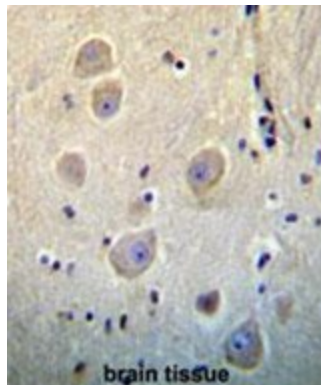
Note: **Molecular Weight:** 22123 Da

Protein Families: Druggable Genome

Product images:



ARHB Antibody (Center) western blot analysis in HL-60 cell line lysates (35ug/lane). This demonstrates the ARHB antibody detected the ARHB protein (arrow).



ARHB Antibody (Center) immunohistochemistry analysis in formalin fixed and paraffin embedded human brain tissue followed by peroxidase conjugation of the secondary antibody and DAB staining. This data demonstrates the use of ARHB Antibody (Center) for immunohistochemistry. Clinical relevance has not been evaluated.