

## Product datasheet for **AP50229PU-N**

### **ARGLU1 (N-term) Rabbit Polyclonal Antibody**

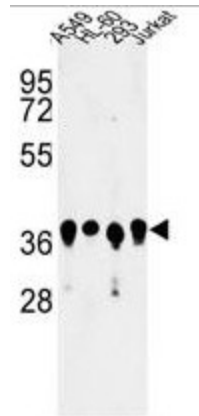
#### **Product data:**

Product Type:	Primary Antibodies
Applications:	FC, IHC, WB
Recommended Dilution:	<b>ELISA:</b> 1/1000. <b>Western blotting:</b> 1/100 - 1/500. <b>Flow Cytometry:</b> 1/10 - 1/50. <b>Immunohistochemistry:</b> 1/50 - 1/100.
Reactivity:	Human
Host:	Rabbit
Isotype:	Ig
Clonality:	Polyclonal
Immunogen:	KLH conjugated synthetic peptide between 54~83 amino acids from the N-terminal region of human ARGLU1
Specificity:	This antibody reacts to ARGLU1.
Formulation:	PBS containing 0.09% (W/V) sodium azide as preservative State: Aff - Purified State: Liquid purified Ig fraction
Concentration:	lot specific
Purification:	Affinity chromatography on Protein A
Conjugation:	Unconjugated
Storage:	Store the antibody undiluted at 2-8°C for one month or (in aliquots) at -20°C for longer. Avoid repeated freezing and thawing.
Stability:	Shelf life: one year from despatch.
Gene Name:	arginine and glutamate rich 1
Database Link:	<a href="#">Entrez Gene 55082 Human</a> <a href="#">Q9NWB6</a>
Synonyms:	DKFZp686O08106; FLJ10154
Note:	<b>Molecular Weight:</b> 33216 Da

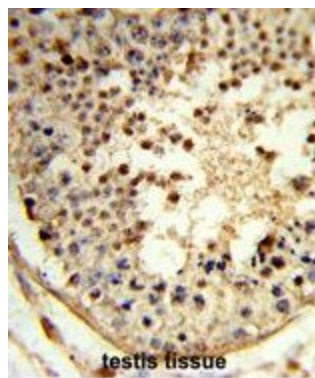


[View online »](#)

**Product images:**

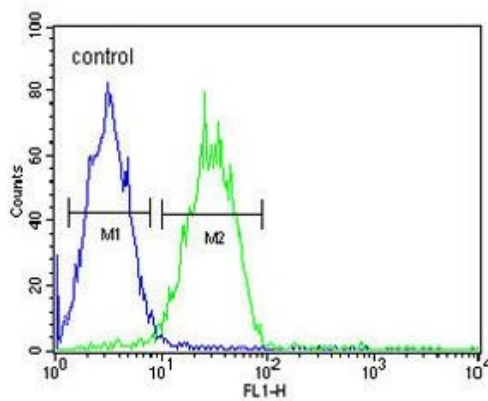


Western blot analysis of ARGLU1 Antibody (N-term) in A549, HL-60, 293, Jurkat cell line lysates (35ug/lane). ARGLU1 (arrow) was detected using the purified Pab.



Formalin-fixed and paraffin-embedded human testis tissue reacted with ARGLU1 Antibody (N-term), which was peroxidase-conjugated to the secondary antibody, followed by DAB staining. This data demonstrates the use of this antibody for immunohistochemistry; clinical relevance has not been evaluated.

**Jurkat**



ARGLU1 Antibody (N-term) flow cytometric analysis of Jurkat cells (right histogram) compared to a negative control cell (left histogram). FITC-conjugated goat-anti-rabbit secondary antibodies were used for the analysis.