

## Product datasheet for **AP50226PU-N**

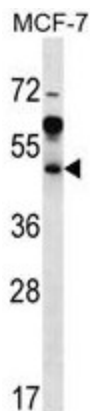
### ARFIP1 (Center) Rabbit Polyclonal Antibody

#### Product data:

Product Type:	Primary Antibodies
Applications:	IHC, WB
Recommended Dilution:	<b>ELISA:</b> 1/1000. <b>Western blotting:</b> 1/100 - 1/500. <b>Immunohistochemistry on paraffin sections:</b> 1/10 - 1/50.
Reactivity:	Human
Host:	Rabbit
Isotype:	Ig
Clonality:	Polyclonal
Immunogen:	KLH conjugated synthetic peptide between 114-144 amino acids from the Central region of human ARFIP1
Specificity:	This antibody reacts to Arfaptin-1.
Formulation:	PBS containing 0.09% (W/V) sodium azide as preservative State: Aff - Purified State: Liquid purified Ig fraction
Concentration:	lot specific
Purification:	Affinity chromatography on Protein A
Conjugation:	Unconjugated
Storage:	Store the antibody undiluted at 2-8°C for one month or (in aliquots) at -20°C for longer. Avoid repeated freezing and thawing.
Stability:	Shelf life: one year from despatch.
Gene Name:	ADP ribosylation factor interacting protein 1
Database Link:	<a href="#">Entrez Gene 27236 Human P53367</a>
Background:	ARFIP1 is a putative target protein of ADP-ribosylation factor.
Synonyms:	ARFIP1
Note:	<b>Molecular Weight:</b> 41738 Da



[View online »](#)

**Product images:**

ARFIP1 Antibody (Center) western blot analysis in MCF-7 cell line lysates (35ug/lane). This demonstrates the ARFIP1 antibody detected the ARFIP1 protein (arrow).



ARFIP1 Antibody (Center) (#AP12992c) immunohistochemistry analysis in formalin fixed and paraffin embedded human placenta tissue followed by peroxidase conjugation of the secondary antibody and DAB staining. This data demonstrates the use of ARFIP1 Antibody (Center) for immunohistochemistry. Clinical relevance has not been evaluated.