

Product datasheet for **AP50218PU-N**

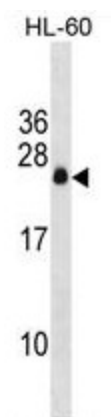
APRG1 (C3orf35) (Center) Rabbit Polyclonal Antibody

Product data:

Product Type:	Primary Antibodies
Applications:	WB
Recommended Dilution:	ELISA: 1/1000. Western blotting: 1/100 - 1/500.
Reactivity:	Human
Host:	Rabbit
Isotype:	Ig
Clonality:	Polyclonal
Immunogen:	KLH conjugated synthetic peptide between 58-88 amino acids from the Central region of human APRG1
Specificity:	This antibody reacts to APRG1.
Formulation:	PBS containing 0.09% (W/V) sodium azide as preservative State: Aff - Purified State: Liquid purified Ig fraction
Concentration:	lot specific
Purification:	Affinity chromatography on Protein A
Conjugation:	Unconjugated
Storage:	Store the antibody undiluted at 2-8°C for one month or (in aliquots) at -20°C for longer. Avoid repeated freezing and thawing.
Stability:	Shelf life: one year from despatch.
Gene Name:	chromosome 3 open reading frame 35
Database Link:	Entrez Gene 339883 Human Q8IVJ8
Synonyms:	AP20 region protein 1,C3orf35
Note:	Molecular Weight: 18525 Da
Protein Families:	Transmembrane



[View online »](#)

Product images:

APRG1 Antibody (Center) western blot analysis in HL-60 cell line lysates (35ug/lane). This demonstrates the APRG1 antibody detected the APRG1 protein (arrow).