

## Product datasheet for **AP50214PU-N**

### APPBP2 (Center) Rabbit Polyclonal Antibody

#### Product data:

Product Type:	Primary Antibodies
Applications:	WB
Recommended Dilution:	<b>ELISA:</b> 1/1000. <b>Western blotting:</b> 1/100 - 1/500.
Reactivity:	Human
Host:	Rabbit
Isotype:	Ig
Clonality:	Polyclonal
Immunogen:	KLH conjugated synthetic peptide between 242-271 amino acids from the Central region of human APPBP2
Specificity:	This antibody reacts to APPBP2.
Formulation:	PBS containing 0.09% (W/V) sodium azide as preservative State: Aff - Purified State: Liquid purified Ig fraction
Concentration:	lot specific
Purification:	Affinity chromatography on Protein A
Conjugation:	Unconjugated
Storage:	Store the antibody undiluted at 2-8°C for one month or (in aliquots) at -20°C for longer. Avoid repeated freezing and thawing.
Stability:	Shelf life: one year from despatch.
Gene Name:	amyloid beta precursor protein binding protein 2
Database Link:	<a href="#">Entrez Gene 10513 Human Q92624</a>



[View online »](#)

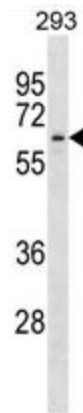
**Background:** The protein encoded by this gene interacts with microtubules and is functionally associated with beta-amyloid precursor protein transport and/or processing. The beta-amyloid precursor protein is a cell surface protein with signal-transducing properties, and it is thought to play a role in the pathogenesis of Alzheimer's disease. This gene has been found to be highly expressed in breast cancer. Multiple polyadenylation sites have been found for this gene.

**Synonyms:** KIAA0228, PAT1

**Note:** **Molecular Weight:** 66853 Da

**Protein Families:** Druggable Genome

### Product images:



APPBP2 Antibody (Center) western blot analysis in 293 cell line lysates (35ug/lane). This demonstrates the APPBP2 antibody detected the APPBP2 protein (arrow).