

## Product datasheet for **AP50213PU-N**

### **APOL6 (Center) Rabbit Polyclonal Antibody**

#### **Product data:**

Product Type:	Primary Antibodies
Applications:	FC, IHC, WB
Recommended Dilution:	<b>ELISA:</b> 1/1000. <b>Western blotting:</b> 1/1000. <b>Immunohistochemistry on paraffin sections:</b> 1/50 - 1/100. <b>Flow Cytometry:</b> 1/10 - 1/50.
Reactivity:	Human
Host:	Rabbit
Isotype:	Ig
Clonality:	Polyclonal
Immunogen:	KLH conjugated synthetic peptide between 126-155 amino acids from the Central region of human APOL6
Specificity:	This antibody reacts to Apolipoprotein L6.
Formulation:	PBS containing 0.09% (W/V) sodium azide as preservative State: Aff - Purified State: Liquid purified Ig fraction
Concentration:	lot specific
Purification:	Affinity chromatography on Protein A
Conjugation:	Unconjugated
Storage:	Store the antibody undiluted at 2-8°C for one month or (in aliquots) at -20°C for longer. Avoid repeated freezing and thawing.
Stability:	Shelf life: one year from despatch.
Gene Name:	apolipoprotein L6
Database Link:	<a href="#">Entrez Gene 80830 Human Q9BWW8</a>
Background:	This gene is a member of the apolipoprotein L gene family. The encoded protein is found in the cytoplasm, where it may affect the movement of lipids or allow the binding of lipids to organelles.

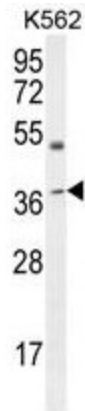


[View online »](#)

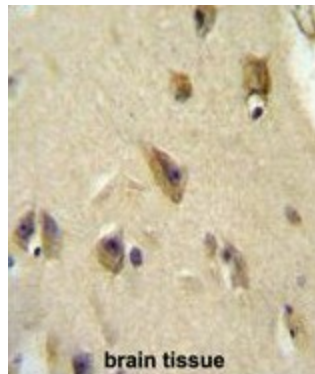
**Synonyms:** Apolipoprotein L-VI, ApoL-VI

**Note:** **Molecular Weight:** 38128 Da

**Product images:**

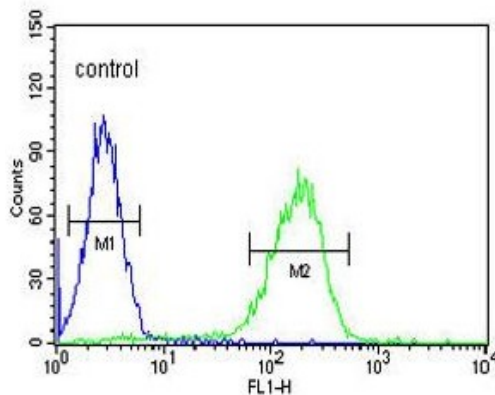


APOL6 Antibody (Center) western blot analysis in K562 cell line lysates (35ug/lane). This demonstrates the APOL6 antibody detected the APOL6 protein (arrow).



APOL6 Antibody (Center) immunohistochemistry analysis in formalin fixed and paraffin embedded human brain tissue followed by peroxidase conjugation of the secondary antibody and DAB staining. This data demonstrates the use of the APOL6 Antibody (Center) for immunohistochemistry. Clinical relevance has not been evaluated.

**K562**



APOL6 Antibody (Center) flow cytometric analysis of K562 cells (right histogram) compared to a negative control cell (left histogram). FITC-conjugated goat-anti-rabbit secondary antibodies were used for the analysis.